

# Stainless steel floor drainage

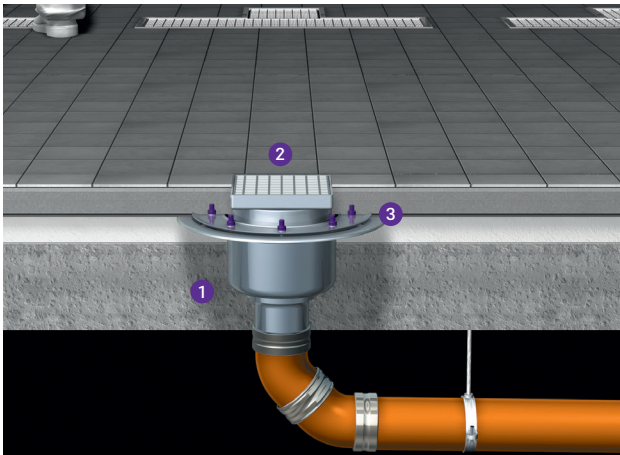


# Floor drain / Channel drains and square channel drains *Ferrofix*

## The stainless steel solution.

Our *Ferrofix* drains made of stainless steel are particularly durable solutions for drainage in commercial rooms, in which particular hygiene requirements apply. The stainless steel grade AISI 304 (AISI 316L on request) makes the drain suitable for use in areas with the highest standards, for example, in food processing companies or swimming pools.

Our channel drains and square channel drains are available as Express or modular versions and in different lengths. In general the length is up to six metres, but we can also check whether other dimensions can be supplied if necessary. On request, we also develop individual solutions, which we also tailor to your requirements in addition to the necessary size.



- ① *Ferrofix* drain body
- ② Upper section with anti-slip cover
- ③ Pressure sealing flange for waterproofing layer



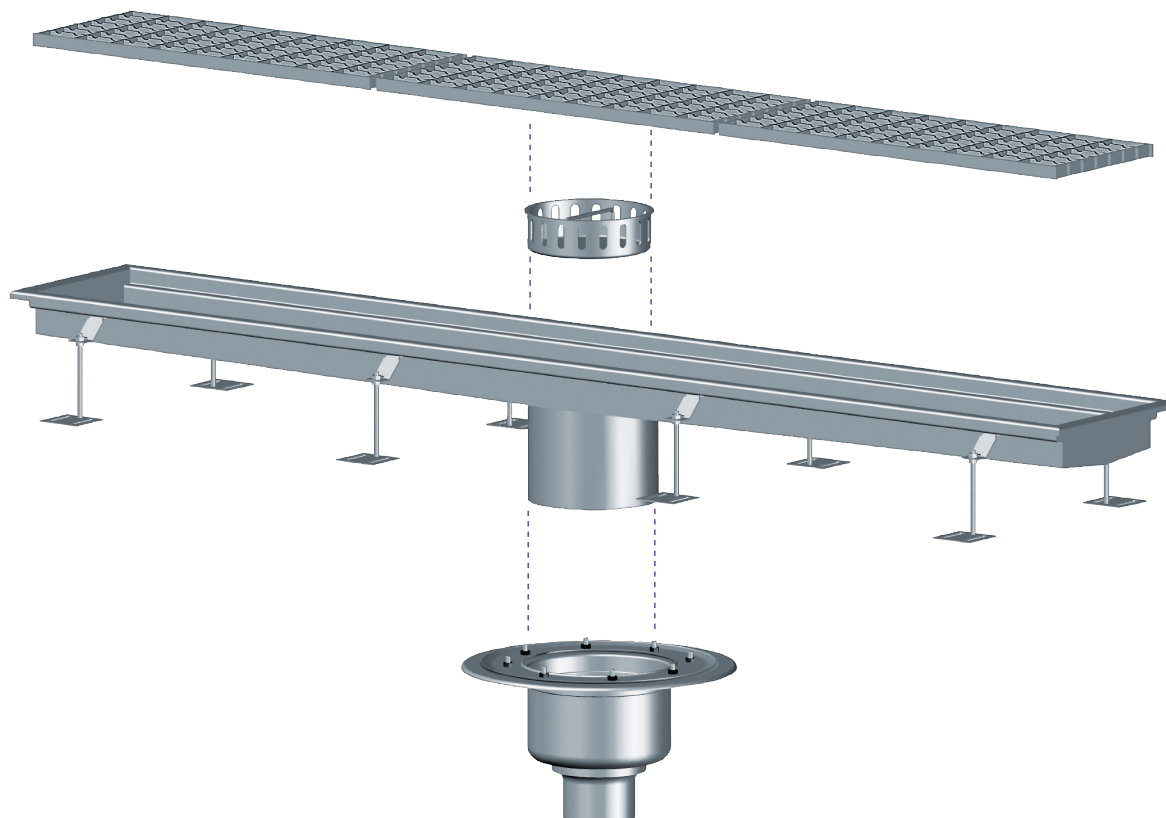
### Floor drain

#### Renovation with *Ferrofix*

On request, the *Ferrofix* is also available as an extremely flat model made of V2A stainless steel – ideal for renovation projects. With low installation depths from 100 to 107 mm, the renovation models are particularly compact. The one-piece drains are supplied with optional connection flange or glued flange.

**With our modular systems 125 and 200, we provide numerous possible combinations for our project drains.**

- Upper sections system 100: Page 6
- Modular system 125: Page 12
- Modular system 200: Page 18



---

## Channel drains and square channel drains

### Express version

On request, we supply the *Ferrofix* as a ready-to-install complete linear and square channel with preassembled outlet sockets, slip-resistant gratings and channel profiles with adhesive flange for shallow bed waterproofing layers. The Express versions are combined with the matching drain bodies *Ferrofix*, *Ecoguss* or *Practicus* as well as optional accessories.

---

With our modular systems 100, 125 and 200, we provide numerous possible combinations for our channel drains and square channel drains.

➤ Upper sections: Page 29

➤ Drain bodies: Page 29

➤ Further accessories: Page 33

## Stainless steel

The following information was compiled based on our know-how and long-term experience in stainless steel processing. The results of analyses are not considered norms. Resistance of the material to a given factor may only be guaranteed by laboratory tests confirming the chemical resistance to a given medium.

### Table of chemical resistance of materials

Chemical	Temp. C°	Steel	Steel	Chemical	Temp. C°	Steel	Steel
		1.4301 304	1.4404 316L			1.4301 304	1.4404 316L
acetone	20	< 0.1	< 0.1	formaldehyde - 37%	20	< 0.1	< 0.1
methyl alcohol	20	< 0.1	< 0.1	ammonium phosphate	20	0.1 - 1	> 1
alcohol propyl	20	< 0.1	< 0.1	disodium phosphate	20	x	x
ammonia - gas (dry)	20	< 0.1	< 0.1	tridodium phosphate	20	< 0.1	< 0.1
ammonia	boiling p.	< 0.1	< 0.1	freon 12	20	< 0.1	< 0.1
aniline	20	< 0.1	< 0.1	furfural	20	< 0.1	< 0.1
ammonium nitrate	20	< 0.1	< 0.1	fluorine gas (wet)	20	> 1	> 1
copper nitrate	20	< 0.1	< 0.1	propane gas	20	< 0.1	< 0.1
silver nitrate	20	< 0.1	< 0.1	glycerine	20	< 0.1	< 0.1
benzene	20	< 0.1	< 0.1	ethylene glycol	20	< 0.1	< 0.1
petroleum oils	20	< 0.1	< 0.1	glucose	20	< 0.1	< 0.1
tan liquor	20	< 0.1	< 0.1	hydroquinone	20	< 0.1	< 0.1
butane	20	< 0.1	< 0.1	iodine	20	> 1	> 1
chlorine (wet)	20	> 1	> 1	methyl ethyl ketone	20	< 0.1	< 0.1
chlorine (dry) - 100%	70	< 0.1	< 0.1	xylene	20	< 0.1	< 0.1
ammonium chloride	20	0.1 - 1	0.1 - 1	nitric acid - 30%	boiling p.	< 0.1	< 0.1
ammonium chloride - 20%	boiling p.	0.1 - 1 SP	< 0.1 SP	nitric acid - 50%	boiling p.	0.1 - 1	0.1 - 1
ammonium chloride - 43%	boiling p.	< 0.1 SP	< 0.1 SP	nitric acid - 65%	80	< 0.1	< 0.1
amyl chloride	20	< 0.1	< 0.1	nitric acid - 65%	boiling p.	0.1 - 1	0.1 - 1
barium chloride	20	< 0.1	< 0.1	benzoic acid	20	< 0.1	< 0.1
zinc chloride	20	0.1 - 1	0.1 - 1	boric acid	20	< 0.1	< 0.1
tin chloride	20	> 1	< 0.1	hydrobromic acid - 20%	20	> 1	> 1
ethyl chloride (chloroethane)	20	< 0.1	< 0.1	bromic acid	20	0.1 - 1	0.1 - 1
aluminium chloride	20	0.1 - 1	0.1 - 1	chloroacetic acid	20	0.1 - 1	0.1 - 1
magnesium chloride	20	> 1	> 1	chromic acid - 50%	20	> 1	> 1
methyl chloride	20	< 0.1	< 0.1	chromic acid - 10%	20	< 0.1	< 0.1
cupric chloride	20	> 1	> 1	citric acid - 25%	boiling p.	> 1	< 0.1
nickel chloride	20	> 1	> 1	citric acid - 50%	20	< 0.1	< 0.1
potassium chloride	20	< 0.1	< 0.1	phosphoric acid - 20%	boiling p.	< 0.1	< 0.1
sodium chloride - 3%	20-60	0.1 - 1 P	< 0.1 P	phosphoric acid - 40%	boiling p.	< 0.1	0.1 - 1
calcium chloride	20	> 1	0.1 - 1	phosphoric acid - 85%	95	> 1	< 0.1
calcium chloride - 20%	20	< 0.1 P	< 0.1 P	maleic acid	20	< 0.1	< 0.1
calcium chloride - 20%	boiling p.	0.1 - 1 SP	< 0.1 P	lactic acid - 10%	10-100	0.1 - 1	< 0.1
chlorobenzene	20	< 0.1	< 0.1	lactic acid - 25%	20	< 0.1	< 0.1
chloroform	20	0.1 - 1	0.1 - 1	lactic acid - 50%	20-80	0.1 - 1	< 0.1
cupric cyanide	20	< 0.1	< 0.1	lactic acid - 50%	boiling p.	> 1	0.1 - 1
potassium cyanide	20	< 0.1	< 0.1	formic acid - 5-10%	20	< 0.1	< 0.1
sodium cyanide	20	< 0.1	< 0.1	formic acid - 10%	80	> 1	< 0.1
cyclohexane	20	< 0.1	< 0.1	formic acid - 50%	24-40	0.1 - 1	< 0.1
cyclohexanone	20	< 0.1	< 0.1	formic acid - 50%	boiling p.	> 1	0.1 - 1
carbon tetrachloride	20	< 0.1	< 0.1	formic acid - 90%	20	> 1	< 0.1
diethylamine	20	< 0.1	< 0.1	perchloric acid - 10%	20	> 1	> 1
dimethylaniline	20	< 0.1	< 0.1	perchloric acid - 70%	20	> 1	> 1
bichloride of potassium	20	< 0.1	< 0.1	acetic acid - 1%	boiling p.	< 0.1	< 0.1
sodium disulphide	20	< 0.1	< 0.1	acetic acid - 10%	boiling p.	0.1 - 1	< 0.1
carbon disulphide	20	< 0.1	< 0.1	acetic acid - 20%	boiling p.	> 1	< 0.1
sulfur dioxide (dry)	20	> 1	< 0.1	acetic acid - 20%	20	< 0.1	< 0.1
sulfur dioxide (wet)	20	x	< 0.1	acetic acid - 80%	20	> 1	< 0.1
carbon dioxide	20	< 0.1	< 0.1	acetic acid - 100%	boiling p.	> 1	< 0.1
sodium bicarbonate	20	< 0.1	< 0.1	oleic acid	20	> 1	< 0.1
phenol - 5%	20	< 0.1	< 0.1	hypochlorous acid (chlorine water)	20	> 1	> 1

## Table designations

<b>Corrosion factor ((mm)/year)</b>	<b>Resistance</b>	<b>Corrosion agent</b>
< 0.1	complete	S - stress corrosion risk
0.1 - 1	partial	P - pitting corrosion risk
> 1	non-resistant	
x	lack of data	

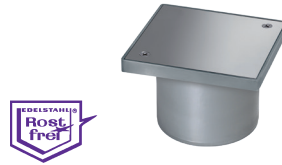
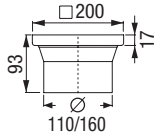
Chemical	Temp. C°	Steel	Steel	Chemical	Temp. C°	Steel	Steel
		1.4301 304	1.4404 316L			1.4301 304	1.4404 316L
palmitic acid - 10%	20	< 0.1	< 0.1	silver sulphate	20	< 0.1	< 0.1
picric acid	20	< 0.1	< 0.1	calcium sulphate	20	< 0.1	< 0.1
prussic acid	20	< 0.1	< 0.1	ferrous sulphate	20	< 0.1	< 0.1
sulphurous acid	20	0.1 - 1	< 0.1	ammonium sulphide	20	< 0.1	< 0.1
sulphuric acid - 1%	100	> 1	0.1 - 1	barium sulphide	20	x	x
sulphuric acid - 5%	20	0.1 - 1	< 0.1	sodium sulphide	20	0.1 - 1	> 1
sulphuric acid - 5%	boiling p.	> 1	> 1	sodium sulphite	20	0.1 - 1	< 0.1
sulphuric acid - 10%	20	> 1	< 0.1	sulphur	20	0.1 - 1	< 0.1
sulphuric acid - 10%	boiling p.	> 1	> 1	caustic soda - 20%	20	< 0.1	< 0.1
sulphuric acid - 50%	20	> 1	> 1	caustic soda - 50%	20	< 0.1	< 0.1
sulphuric acid - 70%	20	> 1	> 1	caustic soda - 80%	20	> 1	< 0.1
sulphuric acid - 20-90%	20-90	> 1	> 1	fruit juices and pulp	20	0.1 - 1	< 0.1
sulphuric acid - 93%	20	> 1	> 1	tannin (tannic acid)	20	< 0.1	< 0.1
hydrochloric acid - 0.5%	20	0.1 - 1 P	< 0.1 P	turpentine	20	< 0.1	< 0.1
hydrochloric acid - 0.5%	boiling p.	> 1	> 1	sodium thiosulfate	20	< 0.1	< 0.1
hydrochloric acid - 1%	20	0.1 - 1 P	< 0.1 P	carbon monoxide	20	< 0.1	< 0.1
hydrochloric acid - 40%	20	> 1	> 1	toluene	20	< 0.1	< 0.1
stearic acid	20	< 0.1	< 0.1	triethylamine	20	< 0.1	< 0.1
oxalic acid	20	< 0.1	< 0.1	phosphorous trichloride	20	< 0.1	< 0.1
carbonic acid	20	< 0.1	< 0.1	trichlorethylene	20	< 0.1	< 0.1
tartaric acid	20	> 1	0.1 - 1	sugar beet syrup	20	< 0.1	< 0.1
fatty acids	20	< 0.1	< 0.1	sugarcane sap	20	x	x
resol	20	< 0.1	< 0.1	potassium carbonate	20	< 0.1	< 0.1
milk	20	< 0.1	< 0.1	sodium carbonate	20	< 0.1	< 0.1
urine	20	< 0.1	< 0.1	calcium carbonate	20	< 0.1	< 0.1
urea (carbamide)	20	< 0.1	< 0.1	whiskey	20	< 0.1	< 0.1
potassium permanganate	20	< 0.1	< 0.1	wine	20	< 0.1	< 0.1
hydrogen peroxide - 90%	20	< 0.1	< 0.1	bromine water	20	> 1	> 1
oil	20	< 0.1	< 0.1	chlorinated water	20	> 1	0.1 - 1 P
vinegar	20	< 0.1	< 0.1	chlorinated water - 1 g/l	20	0.1 - 1 P	0.1 - 1 P
ethyl acetate	20	< 0.1	< 0.1	chlorinated water - 1 mg/l	20	< 0.1	< 0.1
cottonseed oil	20	< 0.1	< 0.1	distilled water	20	< 0.1	< 0.1
linseed oil	20	< 0.1	< 0.1	water („acid mine“)	20	< 0.1	< 0.1
oils and fats	20	< 0.1	< 0.1	sea water (natural)	20	0.1 - 1 P	< 0.1 P
mineral oils	20	x	x	water (fresh)	20	< 0.1	< 0.1
petroleum oils	20	< 0.1	< 0.1	water (salt)	20	< 0.1	< 0.1
oleum	20	< 0.1	< 0.1	ammonium hydroxide	20	< 0.1	< 0.1
beer	20	< 0.1	< 0.1	barium hydroxide - 10%	20	x	x
sodium hypochlorite	20	0.1 - 1	< 0.1	potassium hydroxide	20	< 0.1	< 0.1
calcium hypochlorite	20	> 1	0.1 - 1	sodium hydroxide	20	0.1 - 1	< 0.1
caustic potash	20	< 0.1	< 0.1	calcium hydroxide	20	0.1 - 1	< 0.1
photographic solutions	20	> 1	> 1	bleach - 12.5% Cl	20	x	x
electroplating solutions	20	< 0.1	< 0.1	sodium base - 20%	50	< 0.1	< 0.1
ammonium sulphate	20	0.1 - 1	< 0.1	sodium base - 20%	100	< 0.1	< 0.1
barium sulphate	20	< 0.1	< 0.1	sodium base - 40%	100	0.1 - 1	< 0.1
zinc sulphate	20	< 0.1	< 0.1	sodium ferrocyanide	20	< 0.1	< 0.1
aluminum sulphate	20	< 0.1	< 0.1				
magnesium sulphate	20	< 0.1	< 0.1				
copper sulphate	20	< 0.1	< 0.1				
nickel sulphate	20	< 0.1	< 0.1				
sodium sulphate	20	< 0.1	< 0.1				

### Clean-out *Ferroflox*

for direct access to piping

Upper section in ABS

With closed cover and rim 200×200 mm made of stainless steel AISI 304, class K 3, screwed, without gasket



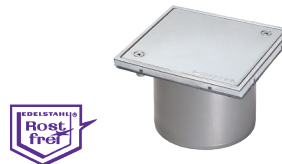
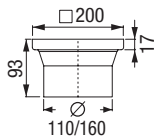
Connection Ø	Art. no.
Ø 110	
Ø 160	

### Clean-out *Ferroflox*

for direct access to piping

Upper section in ABS

With closed cover and rim 150×150 mm made of stainless steel AISI 304, class L 15, screwed, without gasket



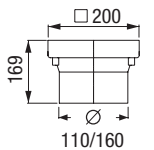
Connection Ø	Art. no.
Ø 110	27 1966

### Clean-out *Ferroflox*

for direct access to piping

Upper section made of stainless steel AISI 304

With closed, screw-type cover plate 200×200 mm made of stainless steel AISI 304, class L 15, gastight and a backwater-proof seal up to 0.5 bar, tileable



Connection Ø	Art. no.
Ø 110	5951020
Ø 160	5951620

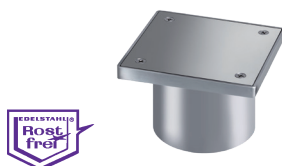
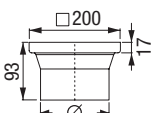
**Note:** Custom made (delivery time on request)

### Clean-out *Ferroflox*

for direct access to piping

Upper section made of stainless steel AISI 304

With closed, screw-type cover plate 146×146 mm made of stainless steel AISI 304, class L 15, screwed odour-tight, with gasket, with a backwater-proof seal up to 0.5 bar



Connection Ø	Art. no.
Ø 110	27 177-PL

**Note:** Custom made (delivery time on request)

## Clean-out *Ferrofix*

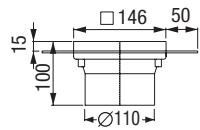
with glue flange, for direct access to piping

System 100

Upper section made of stainless steel AISI 304

With closed, screw-type cover plate 146 × 146 mm made of stainless steel AISI 304, class L 15, screwed odour-tight, with gasket, gastight and a backwater-proof seal up to 0.5 bar, tileable

**Note:** Custom made (delivery time on request)



Connection Ø	Art. no.
Ø 110	27 177-PLF-KF

## Clean-out *Ferrofix*

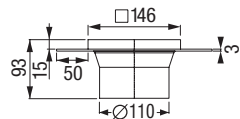
with glue flange, for direct access to piping

System 100

Upper section made of stainless steel AISI 304

With closed cover 146 × 146 mm made of stainless steel AISI 304, class L 15, screwed odour-tight, with gasket, with a backwater-proof seal up to 0.5 bar

**Note:** Custom made (delivery time on request)



Connection Ø	Art. no.
Ø 110	27 177-PL-KF

## Renovation drain *Ferrofix*

made of stainless steel AISI 304, superflat

Made of stainless steel AISI 304

Lateral outlet, with removable odour trap,  
sealing water height 50 mm,  
Drainage capacity 0.8 l/sec flow rate.  
Design height only 107 mm

With slotted cover 138 × 138 mm  
in stainless steel AISI 304, class L 15

**Note:** Custom made (delivery time on request)



Illustration shows Art. no. 59 315

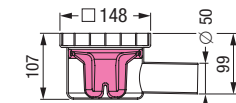


Illustration shows Art. no. 59 305

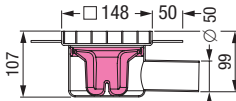


Illustration shows Art. no. 59 315

System 125



Outer diameter  
Ø (mm) Art. no.

With connection flange

Ø 50 59 305

With glue flange

Ø 50 59 315

## Renovation drain *Ferrofix*

made of stainless steel AISI 304, superflat

Made of stainless steel AISI 304

Lateral outlet, with removable odour trap,  
sealing water height 50 mm,  
Drainage capacity 0.8 l/sec flow rate.  
Design height only 100 mm

With slotted cover 138 × 138 mm  
in stainless steel AISI 304, screwed,  
class K 3

**Note:** Custom made (delivery time on request)



Illustration shows Art. no. 59 335

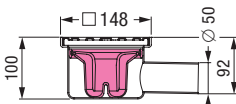


Illustration shows Art. no. 59 325

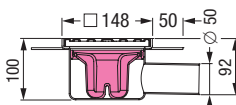


Illustration shows Art. no. 59 335

System 125



Outer diameter  
Ø (mm) Art. no.

With connection flange

Ø 50 59 325

With glue flange

Ø 50 59 335



# Floor drains



## Plate grating

Covered load-bearing flat bars to prevent accumulation of contamination on sharp edges.

## Sheet metal grating

## Mesh grating

Blunted edges to minimise the risk of accumulation of solid waste, on which bacteria may grow.

## Waste basket

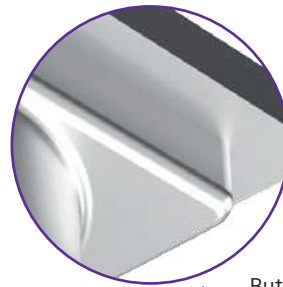
Pressed, with no connected elements, to facilitate cleaning and removal of solid contamination.

## Trap

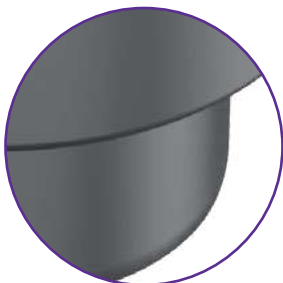
Inverted shape ensures maximum protection against unpleasant odours and bacterial penetration.



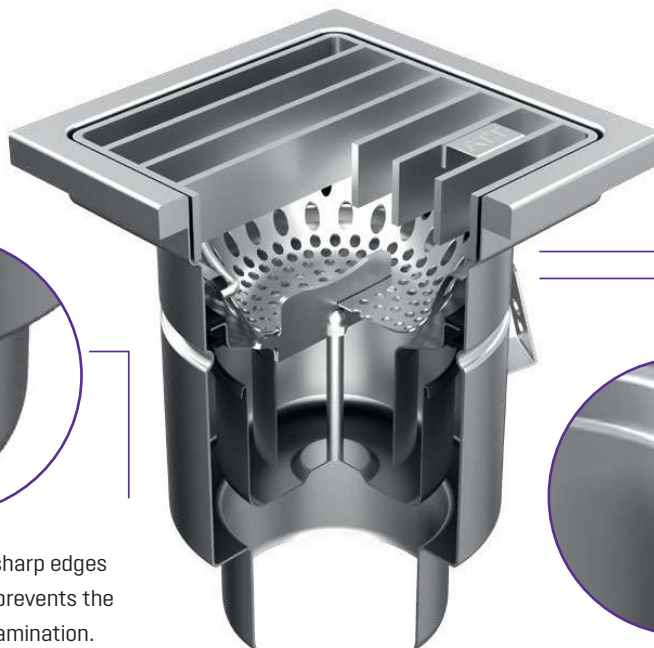
Pressed upper part with no sharp corners facilitates removal of contamination and prevents growth of bacteria.



Butt welding allows maintaining the highest hygienic standards.



Pressed body, with no sharp edges or welded corner joints prevents the accumulation of contamination.



Butt welding of all elements. No welding joints in corners.

# Floor drains

## Description of the floor drains components

### Bodies

Round shape limits waste accumulation and enables easy waste removal. The welded joints are grinded to remove sharp edges and ensure safe installation or cleaning.

### Gratings

Available in various shapes, dimensions and finishing versions. The gratings are selected according to the loads and location of installation. We offer the following grating types : mesh anti-slip, ladder, plate and perforated sheet.

### Waste baskets

Recommended when the drained wastewater has a high content of solids.

### Strainers

Used when the amount of solids is small.

### Traps

Very functional and easy to maintain. Ensures easy access to the sewer, quick cleaning and offers a possibility of checking for locks.

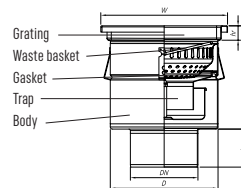
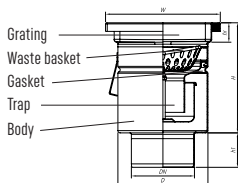
### Flanges

Used when it's necessary to drain water from horizontal systems installed under the floor.



## Industrial floor drains vertical

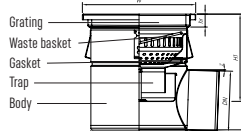
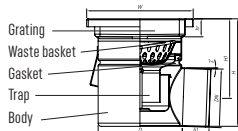
with square top, single-part



Drain symbol	5*57520	5*51020	5*51030	5*51630
Complete drain catalogue number mat. 304 with anti-slip mesh grating	5457520	5451020	5451030	5451630
Complete drain catalogue number mat. 304 with ladder grating	5557520	5551020	5551030	5551630
Complete drain catalogue number mat. 304 with plate grating	5757520	5751020	5751030	5751630
Complete drain catalogue number mat. 304 with perforated sheet grating	5357520	5351020	5351030	5351630
Dimensions				
DN	75	110	110	160
H	192	192	244	244
h1	60	60	60	90
D	157	157	255	255
W	200x200	200x200	300x300	300x300
hr	30	30	30	30
Basket / sediment basket capacity [ l ]	0.45	0.45	2.9	2.9
Trap flow rate [ l/s ]	2.1	2.1	5.7	5.7

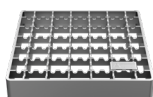
## Industrial floor drains horizontal

with square top, single-part



Drain symbol	5*47520	5*41020	5*41030	5*41630
Complete drain catalogue number mat. 304 with anti-slip mesh grating	5447520	5441020	5441030	5441630
Complete drain catalogue number mat. 304 with ladder grating	5547520	5541020	5541030	5541630
Complete drain catalogue number mat. 304 with plate grating	5747520	5741020	5741030	5741630
Complete drain catalogue number mat. 304 with perforated sheet grating	5347520	5341020	5341030	5341630
Dimensions				
DN	75	110	110	160
H	189	224	264	314
h1	60	60	60	90
D	157	157	255	255
W	200x200	200x200	300x300	300x300
hr	30	30	30	30
Basket / sediment basket capacity [ l ]	0.45	0.45	2.9	2.9
Trap flow rate [ l/s ]	2.1	2.1	5.7	5.7

## Grating symbols



anti-slip mesh



ladder



perforated sheet



plate

## Floor drains *Ferrofix* with pressure sealing flange

Matrix order system

System 125



### Drain body

#### Floor drain *Ferrofix* with pressure sealing flange

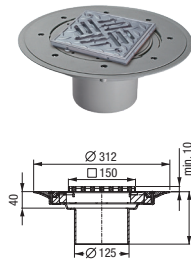
in stainless steel AISI 304, for connection to SML-pipe, with odour trap.  
 Drainage capacity in l/sec with 20 mm / 10 mm threshold see table\*  
 Sealing water height 50 mm

- **Modular system**  
see pages 14 – 15
- **Accessories**  
see pages 16 – 17

### Upper sections

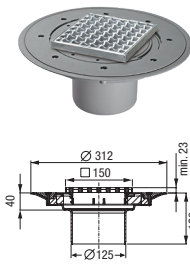
**Shallow bed upper section in ABS**  
with enclosed waterproofing membrane

**Slotted cover**  
138 × 138 mm and rim in stainless steel AISI 304, anti-slip, class L 15, screwed



Art. no. 48 907

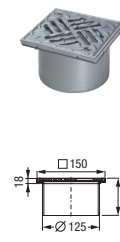
**Anti-slip drain cover**  
138 × 138 mm and rim in stainless steel AISI 304, anti-slip, class L 15



Art. no. 48 965

**Upper section in ABS**

**Slotted cover**  
138 × 138 mm and rim in stainless steel AISI 304, anti-slip, class L 15, screwed

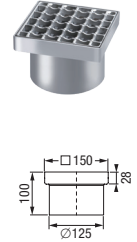


Art. no. 48 176

**Upper section in stainless steel AISI 304**

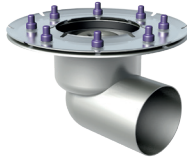
**Anti-slip drain cover**  
138 × 138 mm in stainless steel AISI 304, class L 15 / M 125\*

\*On-site lining work required



Art. no. 54 914

### Drain body with lateral outlet



Ø 78 Art. no. 54 200

### Complete drain comprising a combination of the upper section and drain body

Art. no. 54 200.52

Art. no. 54 200.21

Art. no. 54 200.61

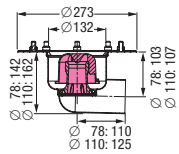
Art. no. 54 200.20

Drainage capacity\* 1.8 / 1.2

Drainage capacity\* 1.9 / 1.4

Drainage capacity\* 1.6 / 0.9

Drainage capacity\* 1.7 / 1.6



Ø 110 Art. no. 54 220

Art. no. 54 220.52

Art. no. 54 220.21

Art. no. 54 220.61

Art. no. 54 220.20

Drainage capacity\* 2.0 / 1.1

Drainage capacity\* 2.3 / 1.6

Drainage capacity\* 1.9 / 1.0

Drainage capacity\* 2.1 / 1.5

### Drain body with vertical outlet



Ø 78 Art. no. 54 210

Art. no. 54 210.52

Art. no. 54 210.21

Art. no. 54 210.61

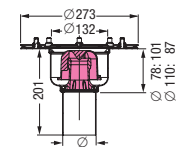
Art. no. 54 210.20

Drainage capacity\* 2.3 / 1.1

Drainage capacity\* 2.4 / 1.4

Drainage capacity\* 2.3 / 1.1

Drainage capacity\* 2.4 / 1.5



Ø 110 Art. no. 54 230

Art. no. 54 230.52

Art. no. 54 230.21

Art. no. 54 230.61

Art. no. 54 230.20

Drainage capacity\* 2.0 / 1.2

Drainage capacity\* 2.3 / 1.6

Drainage capacity\* 1.9 / 1.0

Drainage capacity\* 2.1 / 1.6

# Floor drains *Ferrofix* with connection flange

Matrix order system

System 125



## Drain body

### Floor drain *Ferrofix* with connection flange

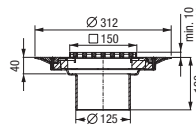
in stainless steel AISI 304, for connection to SML-pipe, with odour trap.  
Drainage capacity in l/sec with 20 mm / 10 mm threshold see table\*  
Sealing water height 50 mm

- **Modular system**  
see pages 14 – 15
- **Accessories**  
see pages 16 – 17

## Upper sections

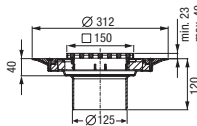
**Shallow bed upper section in ABS**  
with enclosed waterproofing membrane

**Slotted cover**  
138 × 138 mm  
and rim in stainless steel AISI 304, anti-slip, class L 15, screwed



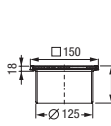
Art. no. **48 907**

**Anti-slip drain cover**  
138 × 138 mm  
and rim in stainless steel AISI 304, anti-slip, class L 15



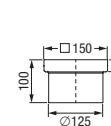
Art. no. **48 965**

**Upper section in ABS**  
**Slotted cover**  
138 × 138 mm  
and rim in stainless steel AISI 304, anti-slip, class L 15, screwed



Art. no. **48 176**

**Upper section in stainless steel AISI 304**  
**Anti-slip drain cover**  
138 × 138 mm  
in stainless steel AISI 304, class L 15 / M 125\*  
\*On-site lining work required



Art. no. **54 914**

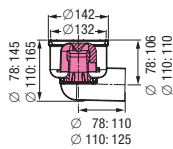
## Drain body with lateral outlet



Ø 78 Art. no. **54 400**

## Complete drain comprising a combination of the upper section and drain body

Art. no. <b>54 400.52</b>	Art. no. <b>54 400.21</b>	Art. no. <b>54 400.61</b>	Art. no. <b>54 400.20</b>
Drainage capacity* 1.7 / 1.1	Drainage capacity* 1.9 / 1.5	Drainage capacity* 1.5 / 1.0	Drainage capacity* 1.7 / 1.6



Ø 110 Art. no. **54 420**

Art. no. <b>54 420.52</b>	Art. no. <b>54 420.21</b>	Art. no. <b>54 420.61</b>	Art. no. <b>54 420.20</b>
Drainage capacity* 1.6 / 1.0	Drainage capacity* 1.8 / 1.5	Drainage capacity* 1.4 / 0.9	Drainage capacity* 1.5 / 1.4

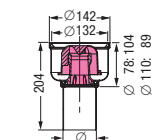
## Drain body with vertical outlet



Ø 78 Art. no. **54 410**

## Complete drain comprising a combination of the upper section and drain body

Art. no. <b>54 410.52</b>	Art. no. <b>54 410.21</b>	Art. no. <b>54 410.61</b>	Art. no. <b>54 410.20</b>
Drainage capacity* 2.4 / 1.2	Drainage capacity* 2.1 / 1.6	Drainage capacity* 2.4 / 1.0	Drainage capacity* 2.4 / 1.6



Ø 110 Art. no. **54 430**

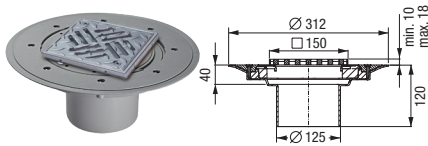
Art. no. <b>54 430.52</b>	Art. no. <b>54 430.21</b>	Art. no. <b>54 430.61</b>	Art. no. <b>54 430.20</b>
Drainage capacity* 2.3 / 1.1	Drainage capacity* 2.0 / 1.5	Drainage capacity* 2.3 / 0.9	Drainage capacity* 2.2 / 1.5

## Modular system 125 *Ferrofix*

System 125

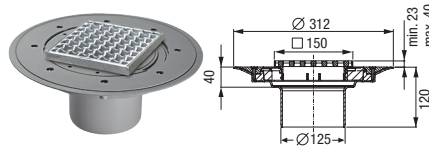
Floor drains *Ferrofix* in stainless steel AISI 304

### Variofix shallow bed upper sections



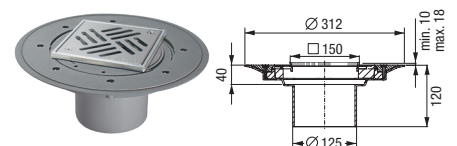
#### with slotted cover

**Material:** ABS, rim in stainless steel  
**Class:** L 15  
**Tile thickness:** max. 16 mm  
**Cover:** 150×150 mm, anti-slip, screwed  
**Inclusive:** Waterproofing membrane  
 Art. no. **48 907**



#### with slotted cover\*

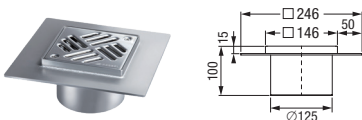
**Material:** ABS, rim in stainless steel  
**Class:** L 15  
**Cover:** 146×146 mm, anti-slip  
**Inclusive:** Waterproofing membrane  
 Art. no. **48 965**



#### with slotted cover

**Material:** ABS, rim in stainless steel  
**Class:** K 3  
**Tile thickness:** max. 18 mm  
**Cover:** 150×150 mm, screwed  
**Inclusive:** Waterproofing membrane  
 Art. no. **48 963**

### Upper sections with glue flange\*



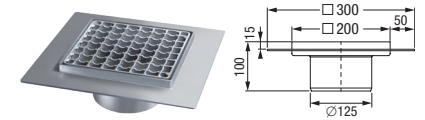
#### with slotted cover

**Class:** K 3  
**Cover:** 146×146 mm  
 Art. no. **54 919**



#### with anti-slip drain cover

**Class:** L 15 / M 125  
**Cover:** 146×146 mm  
 Art. no. **54 915**



#### with anti-slip drain cover

**Class:** L 15 / M 125  
**Cover:** 200×200 mm  
 Art. no. **54 917**

### Sanitary upper sections\*



#### with gas and liquid tight cover

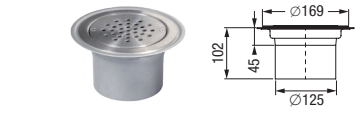
**Class:** L 15  
**Cover:** 150×150 mm  
**Note:** Custom made (delivery time on request), cover available with removal threads  
 Art. no. **59 011**



#### with gas and liquid tight cover

**Class:** L 15  
**Cover:** 150×150 mm, screwed, backwater-proof seal up to 0.5 bar  
**Note:** Custom made (delivery time on request), cover available with removal threads  
 Art. no. **59 013**

### Upper sections for PVC floorings\*



#### with cover

**Class:** L 15  
**Tile thickness:** 1 – 4 mm  
**Cover:** Ø 133 mm, screwed  
**Note:** Custom made (delivery time on request)  
 Art. no. **59 192**

### Clean outs\*



#### with rim and closed cover

**Material:** ABS, cover in stainless steel  
**Class:** L 15  
**Cover:** 150×150 mm, screwed, with gasket  
 Art. no. **54 920**



#### with closed cover

**Class:** L 15  
**Cover:** 150×150 mm, screwed odour-tight, gasket, backwater-proof seal up to 0.5 bar  
 Art. no. **54 912**



#### with closed cover plate

**Class:** L 15  
**Cover:** 150×150 mm, screwed, gastight, backwater-proof seal up to 0.5 bar, tileable  
 Art. no. **54 910**

\*Not for combination with *The Ultraflat 54 / 79* drain bodies

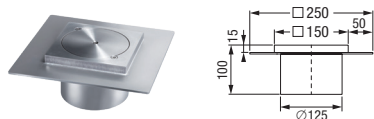
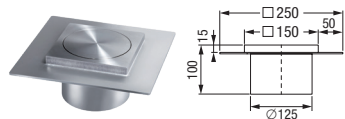
## Modular system 125 *Ferrofix*

Floor drains *Ferrofix* in stainless steel AISI 304

System 125



### Sanitary drain covers with glue flange\*



#### with gas and liquid tight cover

**Class:** L 15

**Cover:** 150×150 mm

**Note:** Custom made (delivery time on request)

**Art. no.** 59 012

#### with gas and liquid tight cover

**Class:** L 15

**Cover:** 150×150 mm, screwed, backwater-proof seal up to 0.5 bar

**Note:** Custom made (delivery time on request)

**Art. no.** 59 014

#### with slotted cover

**Class:** K 3

**Cover:** 100×100 mm

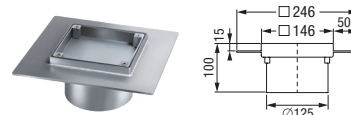
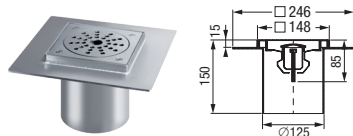
**Note:** Not usable with System 125 sludge trap accessory and odour trap Art. no. 54 188.

Custom made (delivery time on request)

**Art. no.** 59 165

### Upper sections with glue flange\*

### Upper sections with glue flange\*



#### with closed cover

**Class:** L 15

**Cover:** 146×146 mm, screwed odour-tight, gasket, backwater-proof seal up to 0.5 bar

**Art. no.** 54 913

#### with perforated cover "Easy Open"

**Class:** K 3

**Cover:** 148×148 mm

**Note:** Custom made (delivery time on request)

**Art. no.** 59 010

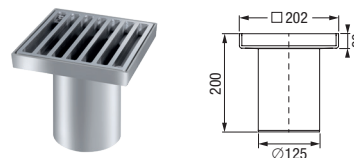
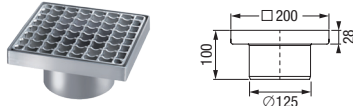
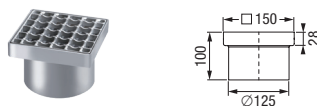
#### with closed cover plate

**Class:** L 15

**Cover:** 146×146 mm, screwed, gastight, backwater-proof seal up to 0.5 bar, tileable

**Art. no.** 54 911

### Upper sections\*



#### with anti-slip drain cover

**Class:** L 15 / M 125

(On-site lining work required)

**Cover:** 138×138 mm

**Art. no.** 54 914

#### with anti-slip drain cover

**Class:** L 15 / M 125

(On-site lining work required)

**Cover:** 200×200 mm

**Art. no.** 54 916

#### with slotted cover

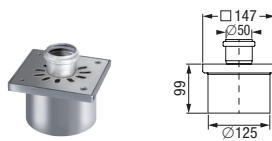
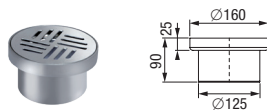
**Class:** D (On-site lining work required)

**Cover:** 190×190 mm, screwed

**Note:** Custom made (delivery time on request)

**Art. no.** 59 400

### Upper sections\*



#### with round slotted cover

**Class:** L 15

**Cover:** Ø 160 mm

**Note:** Custom made (delivery time on request), glue flange on request

**Art. no.** 59 166

#### with cover plate / round inlet slot

**Class:** K 3

**Cover:** 150×150 mm, with insertion socket connection Ø 50 as free inlet to the floor drain

**Art. no.** 48 435

#### with slotted cover

**Class:** K 3

**Cover:** 138×138 mm

**Art. no.** 48 977

Suitable for this product



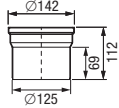


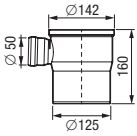

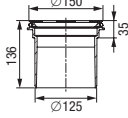

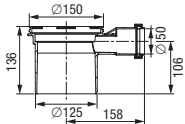
➔ Accessories from page 16

## Accessories

Floor drains *Ferrofix*

System 125



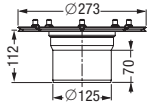


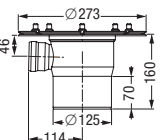
### Extension sections with connection flange

				Art. no.	
without lateral inlet	<b>Material:</b> Stainless steel AISI 304 <b>Inclusive:</b> Lip seal				54 900
with lateral inlet Ø 50	<b>Material:</b> Stainless steel AISI 304 <b>Inclusive:</b> Lip seal				54 902
without lateral inlet	<b>Material:</b> PP <b>Inclusive:</b> Lip seal				48 987
with lateral inlet Ø 50	<b>Material:</b> PP <b>Inclusive:</b> Lip seal				48 989

### Extension sections with glue flange

				Art. no.	
without lateral inlet	<b>Material:</b> Stainless steel AISI 304 <b>Inclusive:</b> Lip seal				54 901
with lateral inlet Ø 50	<b>Material:</b> Stainless steel AISI 304 <b>Inclusive:</b> Lip seal				54 903

### Extension sections with pressure sealing flange

				Art. no.	
without lateral inlet	<b>Material:</b> Stainless steel AISI 304 <b>Version:</b> Flange width 70 mm				54 187
with lateral inlet Ø 50	<b>Material:</b> Stainless steel AISI 304 <b>Version:</b> Flange width 70 mm <b>Inclusive:</b> Plug-in sleeve Ø 50/40				54 189





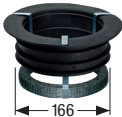

## Accessories

System 125

Floor drains *Ferrofix*

### Fire protection / Passage seal

Compatibility see product description

			Outer diameter Ø (mm)	Art. no.
<b>Fire-Kit</b>	<b>Function:</b> Fire protection insert <b>Compatibility:</b> Only for drain bodies with vertical outlet and odour trap <b>Certification no.:</b> Z-19.17-1719			Ø 58/78/83 <b>48 099</b>
				Ø 50/75 <b>48 099</b>
				Ø 110 <b>48 100</b>
<b>Quick-Fit with fire protection</b>	<b>Function:</b> For core drilling for drain body vertical outlet <b>Compatibility:</b> Only in combination with <i>Fire-Kit</i> protection insert <b>Certification no.:</b> Z-19.17-1719		-	<b>48 990</b>
<b>Quick-Fit without fire protection</b>	<b>Function:</b> For core drilling for drain body vertical outlet		-	<b>48 991</b>

### Hygiene and odour stop

Compatibility see product description

			Art. no.	
<b>Sludge trap</b>	<b>Material:</b> Stainless steel AISI 304 <b>Note:</b> Additional sizes on demand			<b>48 636</b>
<b>Sludge trap</b>	<b>Material:</b> Polymer <b>Compatibility:</b> Fits all drain bodies <i>Ferrofix</i> System 125			<b>48 168</b>
<b>Odour trap</b>	<b>Material:</b> Stainless steel AISI 304 <b>Sealing water height:</b> 50 mm			<b>54 188</b>

### Accessories for industrial vertical and horizontal floor drains, with square top, single- and two-part

W200/75V1, W200/75V2, W200/110V1, W200/110V2, W200/75H1, W200/75H2, W200/110H1, W200/110H2    W300/110V1, W300/110V2, W300/160V1, W300/160V2, W300/110H1, W300/110H2, W300/160H1, W300/160H2

#### Filter basket



#### Sediment basket



#### Trap



## Floor drains *Ferrofix* with pressure sealing flange

Matrix order system

System 200



### Drain body

#### Floor drain *Ferrofix* with pressure sealing flange

in stainless steel AISI 304, for connection to SML-pipe, with odour trap in stainless steel AISI 304. Drainage capacity in l/sec with 20 mm / 10 mm threshold see table\* Sealing water height 70 mm

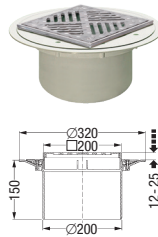
➤ **Modular system**  
see pages 20 – 21

➤ **Accessories**  
see page 22

### Upper sections

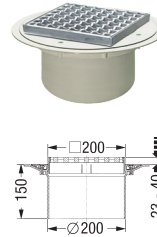
**Shallow bed upper section in ABS**  
with enclosed waterproofing membrane

**Slotted cover**  
200 × 200 mm and rim in stainless steel AISI 304, anti-slip, class L 15, screwed



Art. no. **48 978**

**Anti-slip drain cover**  
190 × 190 mm and rim in stainless steel AISI 304, anti-slip, class L 15



Art. no. **48 969**

**Upper section in stainless steel AISI 304**

**Anti-slip drain cover**  
190 × 190 mm in stainless steel AISI 304, anti-slip, class M 125



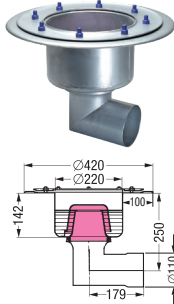
Art. no. **57 410**

**Slotted cover**  
190 × 190 mm in stainless steel AISI 304, class M 125



Art. no. **57 420**

### Drain body with lateral outlet



Ø 110 Art. no. **55 550**

### Complete drain comprising a combination of the upper section and drain body

Art. no. **55 550.52**

Art. no. **55 550.21**

Art. no. **55 550.20**

Art. no. **55 550.30**

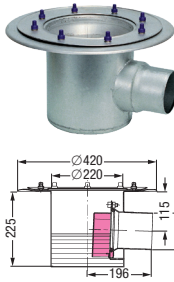
Drainage capacity\* 2.1 / 0.8

Drainage capacity\* 3.2 / 1.4

Drainage capacity\* 3.2 / 1.4

Drainage capacity\* 2.9 / 2.2

### Drain body for low installation height:



Ø 110 Art. no. **142 025**

### Complete drain comprising a combination of the upper section and drain body

Art. no. **142 025.52**

Art. no. **142 025.21**

Art. no. **142 025.20**

Art. no. **142 025.30**

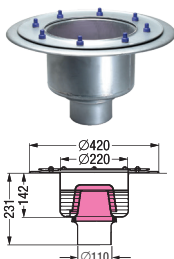
Drainage capacity\* 3.4 / 1.7

Drainage capacity\* 3.8 / 2.7

Drainage capacity\* 3.8 / 2.7

Drainage capacity\* 3.5 / 2.3

### Drain body with vertical outlet



Ø 110 Art. no. **55 600**

### Complete drain comprising a combination of the upper section and drain body

Art. no. **55 600.52**

Art. no. **55 600.21**

Art. no. **55 600.20**

Art. no. **55 600.30**

Drainage capacity\* 3.0 / 1.9

Drainage capacity\* 3.4 / 2.9

Drainage capacity\* 3.4 / 2.9

Drainage capacity\* 3.0 / 2.2



# Floor drains *Ferrofix* with connection flange

System 200



Matrix order system

## Drain body

### Floor drain *Ferrofix* with connection flange

in stainless steel AISI 304, for connection to SML-pipe, with odour trap in stainless steel AISI 304. Drainage capacity in l/sec with 20 mm / 10 mm threshold see table\* Sealing water height 70 mm

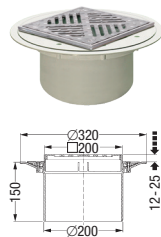
➤ **Modular system**  
see pages 20 – 21

➤ **Accessories**  
see page 22

## Upper sections

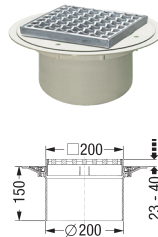
### Shallow bed upper section in ABS with enclosed waterproofing membrane

**Slotted cover**  
200×200 mm and rim in stainless steel AISI 304, anti-slip, class L 15, screwed



Art. no. **48 978**

**Anti-slip drain cover**  
190×190 mm and rim in stainless steel AISI 304, anti-slip, class L 15



Art. no. **48 969**

### Upper section in stainless steel AISI 304

**Anti-slip drain cover**  
190×190 mm in stainless steel AISI 304, anti-slip, class M 125



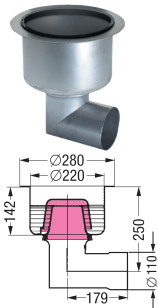
Art. no. **57 410**

**Slotted cover**  
190×190 mm in stainless steel AISI 304, class M 125



Art. no. **57 420**

## Drain body with lateral outlet



Ø 110 Art. no. **55 350**

## Complete drain comprising a combination of the upper section and drain body

Art. no. **55 350.52**

Art. no. **55 350.21**

Art. no. **55 350.20**

Art. no. **55 350.30**

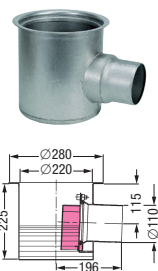
Drainage capacity\* 2.1 / 0.8

Drainage capacity\* 3.2 / 1.4

Drainage capacity\* 3.2 / 1.4

Drainage capacity\* 2.9 / 2.2

## Drain body for low installation height:



Ø 110 Art. no. **142 026**

## Complete drain comprising a combination of the upper section and drain body

Art. no. **142 026.52**

Art. no. **142 026.21**

Art. no. **142 026.20**

Art. no. **142 026.30**

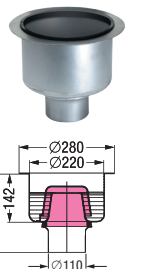
Drainage capacity\* 3.4 / 1.7

Drainage capacity\* 3.8 / 2.7

Drainage capacity\* 3.8 / 2.7

Drainage capacity\* 3.5 / 2.3

## Drain body with vertical outlet



Ø 110 Art. no. **55 400**

## Complete drain comprising a combination of the upper section and drain body

Art. no. **55 400.52**

Art. no. **55 400.21**

Art. no. **55 400.20**

Art. no. **55 400.30**

Drainage capacity\* 3.0 / 1.9

Drainage capacity\* 3.4 / 2.9

Drainage capacity\* 3.4 / 2.9

Drainage capacity\* 3.0 / 2.2

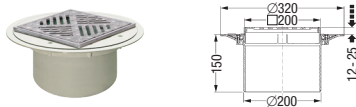


## Modular system 200 *Ferrofix*

Floor drains *Ferrofix* in stainless steel AISI 304

System 200

### Variofix shallow bed upper sections



#### with slotted cover

**Material:** ABS, rim in stainless steel

**Class:** L 15

**Tile thickness:** max. 23 mm

**Cover:** 200×200 mm, anti-slip, screwed

**Inclusive:** Waterproofing membrane

**Art. no. 48 978**



#### with slotted cover

**Material:** ABS, rim in stainless steel

**Class:** L 15

**Cover:** 200×200 mm, anti-slip

**Inclusive:** Waterproofing membrane

**Art. no. 48 969**

### Upper section with glue flange



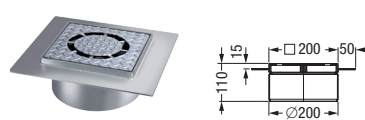
#### with slotted cover

**Class:** L 15 / M 125

**Cover:** 300×300 mm

**Note:** Custom made (delivery time on request)

**Art. no. 57 425-KF**



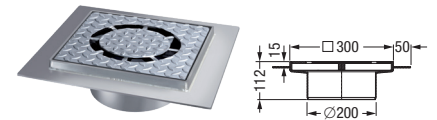
#### with round-slot cover plate

**Class:** L 15 / M 125

**Cover:** 200×200 mm

**Note:** Custom made (delivery time on request)

**Art. no. 57 430-KF**



#### with round-slot cover plate

**Class:** L 15 / M 125

**Cover:** 300×300 mm

**Note:** Custom made (delivery time on request)

**Art. no. 57 435-KF**

### Upper sections

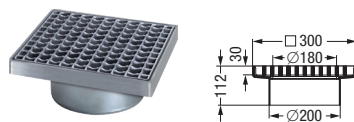


#### with anti-slip drain cover

**Class:** M 125

**Cover:** 200×200 mm, anti-slip

**Art. no. 57 410**



#### with anti-slip drain cover

**Class:** M 125 (On-site lining work required)

**Cover:** 290×290 mm, anti-slip

**Art. no. 57 415**



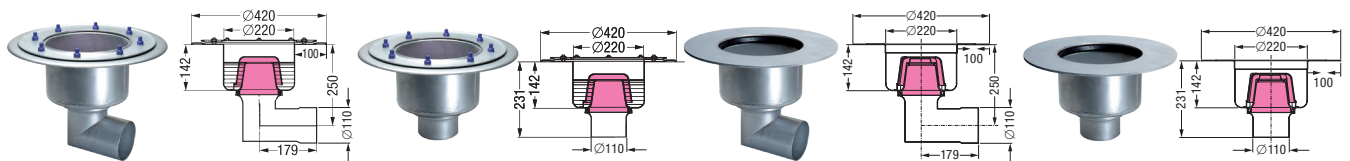
#### with slotted cover

**Class:** M 125

**Cover:** 200×200 mm

**Art. no. 57 420**

### Drain bodies



#### with pressure sealing flange

**Version:** Odour trap, connection to SML-pipe

**Outlet:** Lateral / vertical Ø 110

**Sealing water height:** 70 mm

Lateral outlet **Art. no. 55 550**  
Vertical outlet **Art. no. 55 600**

#### with glue flange

**Version:** Odour trap, connection to SML-pipe

**Outlet:** Lateral / vertical Ø 110

**Sealing water height:** 70 mm

Lateral outlet **Art. no. 55 550-KF**  
Vertical outlet **Art. no. 55 600-KF**

## Modular system 200 *Ferroxif*

Floor drains *Ferroxif* in stainless steel AISI 304

System 200



### Upper sections with glue flange



#### with anti-slip drain cover

**Class:** L 15 / M 125

**Cover:** 200×200 mm

**Note:** Custom made (delivery time on request)

**Art. no.** 57 410-KF



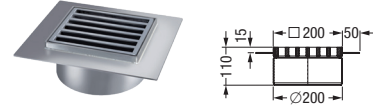
#### with anti-slip drain cover

**Class:** L 15 / M 125

**Cover:** 300×300 mm

**Note:** Custom made (delivery time on request)

**Art. no.** 57 415-KF



#### with slotted cover

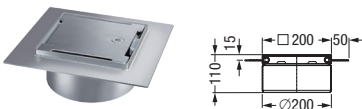
**Class:** L 15 / M 125

**Cover:** 200×200 mm

**Note:** Custom made (delivery time on request)

**Art. no.** 57 420-KF

### Upper sections with glue flange



#### with closed cover

**Class:** L 15 / M 125

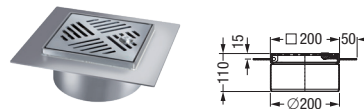
**Cover:** 200×200 mm

**Compatibility:** Special key Art. no. 48 954-SL (optional)

**Version:** Lateral drain slots, safety valve system

**Note:** Custom made (delivery time on request)

**Art. no.** 48 954-S-V2A-KF



#### with slotted cover, tiltable

**Class:** K 3

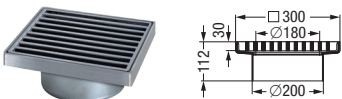
**Cover:** 200×200 mm

**Version:** Glue flange made of flat steel 50×3 mm, locking system made of stainless steel for standard control cabinet access keys

**Note:** Custom made (delivery time on request)

**Art. no.** 48 954-Z-V2A-KF

### Upper sections

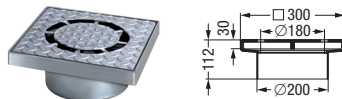


#### with slotted cover

**Class:** M 125 (On-site lining work required)

**Cover:** 290×290 mm

**Art. no.** 57 425



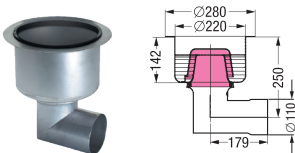
#### with round-slot cover plate

**Class:** M 125 (On-site lining work required)

**Cover:** 290×290 mm, anti-slip

**Art. no.** 57 435

### Drain bodies



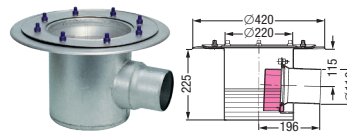
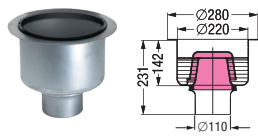
#### with connection flange

**Version:** Odour trap, connection to SML-pipe

**Outlet:** Lateral / vertical Ø 110

**Sealing water height:** 70 mm

Lateral outlet **Art. no.** 55 350  
Vertical outlet **Art. no.** 55 400



#### with pressure sealing flange / connection flange

**Version:** Odour trap, connection to SML-pipe

**Outlet:** Lateral / vertical Ø 110

**Sealing water height:** 70 mm

Pressure sealing flange **Art. no.** 142 025  
Connection flange **Art. no.** 142 026



## Accessories

Floor drains *Ferrofix*

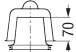

### Extension sections

			Art. no.	
<b>with connection flange</b>	<b>Material:</b> PP <b>Inclusive:</b> Lip seal			48 988
<b>with connection flange</b>	<b>Material:</b> Stainless steel AISI 304 <b>Inclusive:</b> Lip seal			27 186
<b>with pressure sealing flange</b>	<b>Material:</b> Stainless steel AISI 304			27 185

### Upper sections

			Art. no.	
<b>Shallow bed upper section</b>	<b>Material:</b> ABS <b>Cover:</b> Slotted cover 200 × 200 mm and rim in stainless steel AISI 304, screwed, class L 15 <b>Inclusive:</b> Waterproofing membrane			48 968
<b>with support rim</b>	<b>Material:</b> <i>Ecoguss</i> <b>Cover:</b> Round slotted cover Ø 235 mm class B 125, with <i>Lock &amp; Lift System</i>			67 985

### Hygiene / odour stop / security

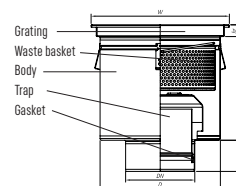
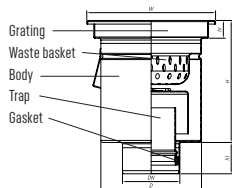
			Art. no.	
<b>removable odour trap</b>	<b>Material:</b> Stainless steel AISI 304 <b>Sealing water height:</b> 70 mm			27 182
<b>Sludge trap</b>	<b>Material:</b> Stainless steel AISI 304 <b>Height:</b> 60 mm			67 302
<b>Sludge trap</b>	<b>Material:</b> Stainless steel AISI 304 <b>Height:</b> 150 mm			67 301
<b>Sludge trap</b>	<b>Material:</b> PE-HD			67 300
<b>Access key</b>	<b>Material:</b> Stainless steel AISI 304 <b>Compatibility:</b> For Art. no. 48 954-S-V2A-KF			48 954-SL

### Fire protection insert

			Art. no.	
<b>Fire-Kit 200</b>	<b>Compatibility:</b> Only for drain bodies with vertical outlet and odour trap <b>Certification no.:</b> Z-19.17-1719			48 200

## Industrial floor drains vertical

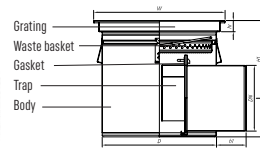
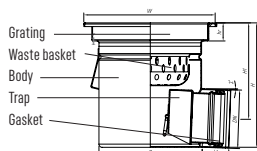
with square top, single-part



Drain symbol	5*51025	5*52040
Complete drain catalogue number mat. 304 with anti-slip mesh grating	5451025	5452040
Complete drain catalogue number mat. 304 with ladder grating	5551025	5552040
Complete drain catalogue number mat. 304 with plate grating	5751025	5752040
Complete drain catalogue number mat. 304 with perforated sheet grating	5351025	5352040
Dimensions		
DN	110	200
H	234	334
h1	60	90
D	193	348
W	250x250	400x400
hr	30	30
Basket / sediment basket capacity [ l ]	1	8.7
Trap flow rate [ l/s ]	3	13.9

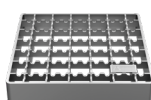
## Industrial floor drains horizontal

with square top, single-part



Drain symbol	5*41025	5*42040
Complete drain catalogue number mat. 304 with anti-slip mesh grating	5441025	5442040
Complete drain catalogue number mat. 304 with ladder grating	5541025	5542040
Complete drain catalogue number mat. 304 with plate grating	5741025	5742040
Complete drain catalogue number mat. 304 with perforated sheet grating	5341025	5342040
Dimensions		
DN	110	200
H	246	354
h1	60	90
D	193	348
W	250x250	400x400
hr	30	30
Basket / sediment basket capacity [ l ]	1	2.7
Trap flow rate [ l/s ]	2.1	9.2

## Grating symbols



anti-slip mesh



ladder



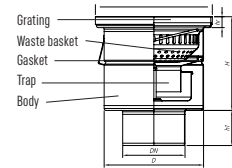
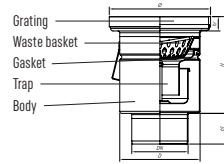
perforated sheet



plate

## Industrial floor drains vertical

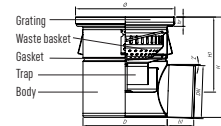
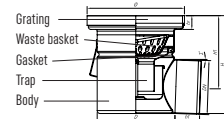
with round top, single-part



Drain symbol	50*57520	50*51020	50*51030	50*51630
Complete drain catalogue number mat. 304 with anti-slip mesh grating	50457520	50451020	50451030	50451630
Complete drain catalogue number mat. 304 with ladder grating	50557520	50551020	50551030	50551630
Complete drain catalogue number mat. 304 with plate grating	50757520	50751020	50751030	50751630
Complete drain catalogue number mat. 304 with tight plate grating	50857520	50851020	50851030	50851630
Dimensions				
DN	75	110	110	160
H	189	189	240	240
h1	60	60	60	90
D	157	157	255	255
Ø	198	198	300	300
hr	25	25	25	25
Basket / sediment basket capacity [ l ]	0.45	0.45	2.9	2.9
Trap flow rate [ l/s ]	2.1	2.1	5.7	5.7

## Industrial floor drains horizontal

with round top, single-part



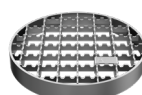
Drain symbol	50*47520	50*41020	50*41030	50*41630
Complete drain catalogue number mat. 304 with anti-slip mesh grating	50447520	50441020	50441030	50441630
Complete drain catalogue number mat. 304 with ladder grating	50547520	50541020	50541030	50541630
Complete drain catalogue number mat. 304 with plate grating	50747520	50741020	50741030	50741630
Complete drain catalogue number mat. 304 with tight plate grating	50847520	50841020	50841030	50841630
Dimensions				
DN	75	110	110	160
H	186	221	260	310
h1	60	60	60	90
D	157	157	255	255
Ø	198	198	300	300
hr	25	25	25	25
Basket / sediment basket capacity [ l ]	0.45	0.45	2.9	2.9
Trap flow rate [ l/s ]	2.1	2.1	5.7	5.7

Drain grating with a tight plate cover is removed using a suction cap. This is an additional element – it is not available in the drain set.

In case of floor drains with a tight plate cover, an 8 [mm] thick grating with a circumference seal is used.



### Grating symbols



anti-slip mesh



ladder



plate

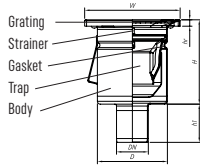


tight plate

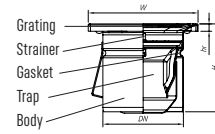


## Mini floor drains vertical

with square top, single-part



WITH DN 50 OUTLET

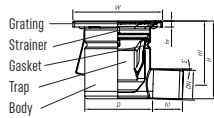


WITH DN 110 OUTLET

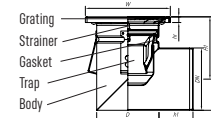
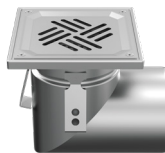
Drain symbol		4355015	4357515	4351015
Dimensions	DN	50	75	110
	H	132	132	120
	h1	60	60	-
	D	110	110	110
	W	150x150	150x150	150x150
	hr	2	2	2
Trap flow rate [ l/s ]		0.9	0.9	0.9

## Mini floor drains horizontal

with square top, single-part



WITH DN 50 OUTLET



WITH DN 110 OUTLET

Drain symbol		4345015	4347515	4341015
Dimensions	DN	50	75	110
	H	132	132	165
	h1	60	60	60
	D	110	110	110
	W	150x150	150x150	150x150
	hr	2	2	2
Trap flow rate [ l/s ]		0.9	0.9	0.9

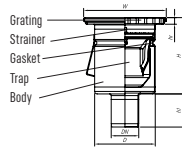
## Perforated sheet grating



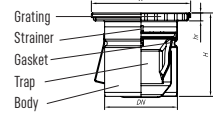
perforated sheet

### Mini floor drains vertical

with square top, single-part



WITH DN 50 OUTLET

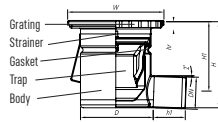


WITH DN 110 OUTLET

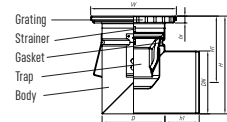
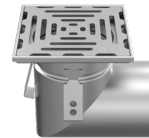
Drain symbol		4455015	4457515	4451015
Dimensions	DN	50	75	110
	H	137	137	125
	h1	60	60	-
	D	110	110	110
	W	150x150	150x150	150x150
	hr	10	10	10
Trap flow rate [ l/s ]		0.9	0.9	0.9

### Mini floor drains horizontal

with square top, single-part



WITH DN 50 OUTLET



WITH DN 110 OUTLET

Drain symbol		4445015	4447515	4441015
Dimensions	DN	50	75	110
	H	137	137	170
	h1	60	60	60
	D	110	110	110
	W	150x150	150x150	150x150
	hr	10	10	10
Trap flow rate [ l/s ]		0.9	0.9	0.9

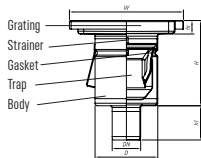
### Perforated sheet grating



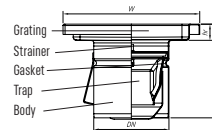
perforated plate

## Mini floor drains vertical

with square top, single-part



WITH DN 50 OUTLET

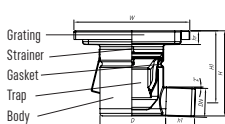


WITH DN 110 OUTLET

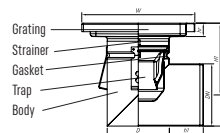
Drain symbol	4*55020	4*57520	4*51020
Complete drain catalogue number mat. 304 with anti-slip mesh grating	4455020	4457520	4451020
Complete drain catalogue number mat. 304 with ladder grating	4555020	4557520	4551020
Complete drain catalogue number mat. 304 with plate grating	4755020	4757520	4751020
Complete drain catalogue number mat. 304 with perforated sheet grating	4355020	4357520	4351020
Dimensions			
DN	50	75	110
H	149	149	137
h1	60	60	-
D	110	110	110
W	200x200	200x200	200x200
hr	20	20	20
Trap flow rate [ l/s ]	0.9	0.9	0.9

## Mini floor drains horizontal

with square top, single-part



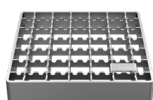
WITH DN 50 OUTLET



WITH DN 110 OUTLET

Drain symbol	4*45020	4*47520	4*41020
Complete drain catalogue number mat. 304 with anti-slip mesh grating	4445020	4447520	4441020
Complete drain catalogue number mat. 304 with ladder grating	4545020	4547520	4541020
Complete drain catalogue number mat. 304 with plate grating	4745020	4747520	4741020
Complete drain catalogue number mat. 304 with perforated sheet grating	4345020	4347520	4341020
Dimensions			
DN	50	75	110
H	149	149	182
h1	60	60	60
D	110	110	110
W	200x200	200x200	200x200
hr	20	20	20
Trap flow rate [ l/s ]	0.9	0.9	0.9

## Grating symbols



anti-slip mesh



ladder



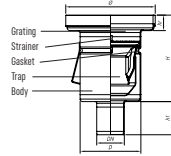
perforated sheet



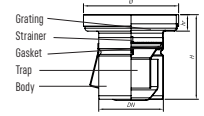
plate

### Mini floor drains vertical

with round top, single-part



WITH DN 50 OUTLET

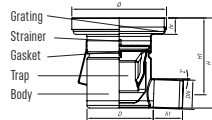


WITH DN 110 OUTLET

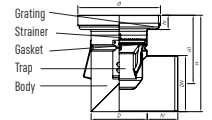
Drain symbol		40*55016	40*55020	40*57516	40*57520	40*51016	40*51020
Complete drain catalogue number mat. 304 with anti-slip mesh grating		40455016	40455020	40457516	40457520	40451016	40451020
Complete drain catalogue number mat. 304 with ladder grating		40555016	40555020	40557516	40557520	40551016	40551020
Complete drain catalogue number mat. 304 with plate grating		40755016	40755020	40757516	40757520	40751016	40751020
Complete drain catalogue number mat. 304 with tight plate grating		40855016	40855020	40857516	40857520	40851016	40851020
Dimensions	DN	50	50	75	75	110	110
	H	156	156	156	156	144	144
	h1	60	60	60	60	-	-
	D	110	110	110	110	110	110
	Ø	162	198	162	198	162	198
hr	25	25	25	25	25	25	
Trap flow rate [ l/s ]		0.9	0.9	0.9	0.9	0.9	0.9

### Mini floor drains horizontal

with round top, single-part



WITH DN 50 OUTLET



WITH DN 110 OUTLET

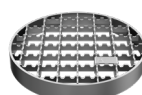
Drain symbol		40*45016	40*45020	40*47516	40*47520	40*41016	40*41020
Complete drain catalogue number mat. 304 with anti-slip mesh grating		40445016	40445020	40447516	40447520	40441016	40441020
Complete drain catalogue number mat. 304 with ladder grating		40545016	40545020	40547516	40547520	40541016	40541020
Complete drain catalogue number mat. 304 with plate grating		40745016	40745020	40747516	40747520	40741016	40741020
Complete drain catalogue number mat. 304 with tight plate grating		40845016	40845020	40847516	40847520	40841016	40841020
Dimensions	DN	50	50	75	75	110	110
	H	156	156	156	156	189	189
	h1	60	60	60	60	60	60
	D	110	110	110	110	110	110
	Ø	162	198	162	198	162	198
hr	25	25	25	25	25	25	
Trap flow rate [ l/s ]		0.9	0.9	0.9	0.9	0.9	0.9

Drain grating with a tight plate cover is removed using a suction cap. This is an additional element – it is not available in the drain set.

In case of floor drains with a tight plate cover, an 8 [mm] thick grating with a circumference seal is used.



### Grating symbols



anti-slip mesh



ladder



plate



tight plate

## Modular system 125 *Ferrofix Express*

System 125

Linear / Square channel drain *Ferrofix* in stainless steel AISI 304

### Linear channel drain *Ferrofix Express* versions

Made of stainless steel AISI 304

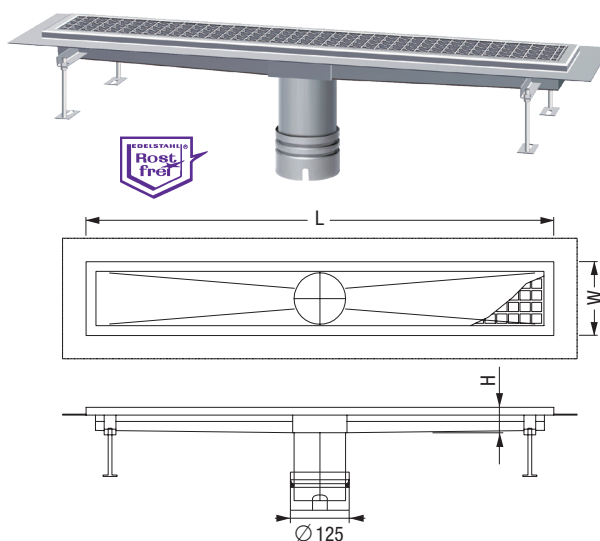
Material thickness 2.0 mm - acid-treated in pickling bath, visible cover sanded, with longitudinal and transverse slopes, feet for height adjustment, with welded distance grates to secure the covers, including drain pipes in stainless steel.

Channel profile for shallow bed seals, with adhesive edge 15 mm deep and 50 mm turned down all-round to the outside, with welded mitre joints.

#### Cover:

With slotted cover in stainless steel AISI 304, anti-slip R11, acid-treated in pickling bath. Mesh width 23×23 mm, load class L 15 (1.5 ton.)

**Note:** Available from stock



➤ **Optionally as an accessory:** Matching drain body System 125 see page below

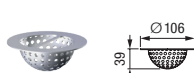
Dimensions W×L×H in mm	Art. no.
158×542×55	60 15 050
158×1042×55	60 15 100
158×1550×58	60 15 150
158×2058×60	60 15 200
300×547×58	60 30 050
300×1047×60	60 30 100
300×1555×63	60 30 150
300×2063×65	60 30 200

### Accessories



#### Sludge trap

**Material:** Stainless steel AISI 304  
**Compatibility:** For channel widths from 300 mm  
**Height:** 31 mm  
**Art. no. 48 636**



#### Sludge trap

**Material:** Stainless steel AISI 304  
**Compatibility:** For channel widths up to 158 mm  
**Height:** 39 mm  
**Art. no. 67 305**

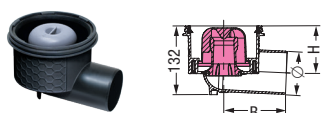


#### Fire-Kit Fire protection insert

Only for drains with vertical outlet and odour trap  
**Certification no.:** Z-19.17-1719  
 Ø 58/78/83 **Art. no. 48 099**  
 Ø 50/75 **Art. no. 48 099**  
 Ø 110 **Art. no. 48 100**

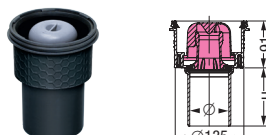
### Drain bodies with connection flange

for connection to SML-pipe and removable odour trap



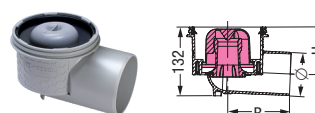
#### Ecoguss, lateral outlet

**Material:** Ecoguss  
**Sealing water height:** 50 mm  
 Ø 58 B×H 245×120 mm **Art. no. 48 358**  
 Ø 78 B×H 134×109 mm **Art. no. 48 378**  
 Ø 83 B×H 134×108 mm **Art. no. 48 383**  
 Ø 110 B×H 148×92 mm **Art. no. 48 311**



#### Ecoguss, vertical outlet

**Material:** Ecoguss  
**Sealing water height:** 50 mm  
 Ø 58 H 100 mm **Art. no. 48 458**  
 Ø 78 H 110 mm **Art. no. 48 478**  
 Ø 83 H 110 mm **Art. no. 48 483**  
 Ø 110 H 110 mm **Art. no. 48 411**



#### Practicus, lateral outlet

**Material:** PP  
**Sealing water height:** 50 mm  
 Ø 50 B×H 245×120 mm **Art. no. 45 150**  
 Ø 75 B×H 134×109 mm **Art. no. 45 170**  
 Ø 110 B×H 148×92 mm **Art. no. 45 110**

## Modular system 125 *Ferrofix Express*

System 125

Linear / Square channel drain *Ferrofix* in stainless steel AISI 304

### Square/rectangular channel drain *Ferrofix Express* versions

Made of stainless steel AISI 304

Material thickness 2.0 mm - acid-treated in pickling bath, visible cover sanded, with longitudinal and transverse slopes, feet for height adjustment, with welded distance grates to secure the covers, including drain pipes in stainless steel.

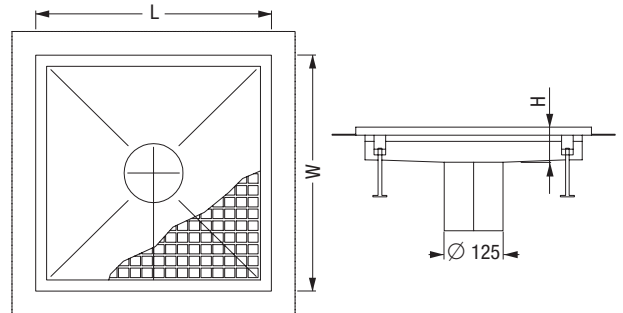
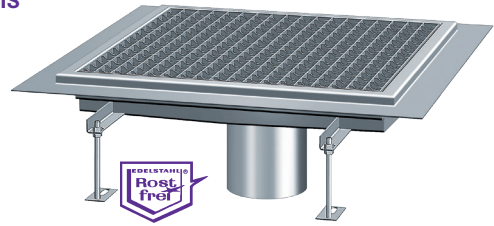
Channel profile for shallow bed seals, with adhesive edge 15 mm deep and 50 mm turned down all-round to the outside, with welded mitre joints.

**Cover:**

With slotted cover in stainless steel AISI 304, anti-slip R11, acid-treated in pickling bath. Mesh width 23×23 mm, load class L 15 (1.5 ton.)

**Note:** Available from stock

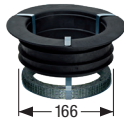
➤ **Optionally as an accessory:** Matching drain body System 125 see page below



**Dimensions W×L×H in mm      Art. no.**

350×350×60	<b>60 35 035</b>
500×500×65	<b>60 50 050</b>
500×953×70	<b>60 50 100</b>
800×800×60	<b>60 80 080</b>
1000×1000×65	<b>61 00 100</b>

### Accessories



#### *Quick-Fit* the passage seal, with fire protection

For core drilling, for drain body vertical outlet (only use in combination with *Fire-Kit* fire protection insert)

**Certification no.:** Z-19.17-1719

**Art. no. 48 990**

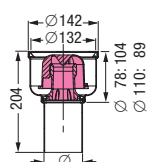
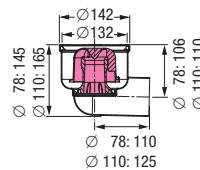
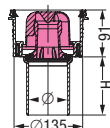
#### *Quick-Fit* the passage seal

For core drilling, for drain body vertical outlet

**Art. no. 48 991**

### Drain bodies with connection flange

for connection to SML-pipe and removable odour trap



#### *Practicus*, vertical outlet

**Material:** PP

**Sealing water height:** 50 mm

Ø 50    H 100 mm    **Art. no. 45 250**

Ø 75    H 110 mm    **Art. no. 45 270**

Ø 110    H 110 mm    **Art. no. 45 210**

#### *Ferrofix*, lateral outlet

**Material:** Stainless steel AISI 304

**Sealing water height:** 50 mm

Ø 78    **Art. no. 54 400**

Ø 110    **Art. no. 54 420**

Further nominal sizes (e.g. Ø 50, 53, 56, 58, 63, 75, 83, 90) on request or according to requirement

#### *Ferrofix*, vertical outlet

**Material:** Stainless steel AISI 304

**Sealing water height:** 50 mm

Ø 78    **Art. no. 54 410**

Ø 110    **Art. no. 54 430**

Further nominal sizes (e.g. Ø 50, 53, 56, 58, 63, 75, 83, 90) on request or according to requirement

## Box channel *Ferroxif*

in stainless steel AISI 304

Made of stainless steel AISI 304

Material thickness 2.0 mm - acid-treated in pickling bath, visible cover sanded, with longitudinal and transverse slopes, feet for height adjustment, with welded distance grates to secure the covers.

Including drain pipes in stainless steel

(System 100 =  $\varnothing$  110 mm, System 125 =  $\varnothing$  125 mm, System 200 =  $\varnothing$  200 mm – depends on channel width), material 1.4301 – AISI 304, (1.4404 or 1.4571 – AISI 316L on request)

**Channel widths:** From 150, 200, 250 etc. to 1000 mm

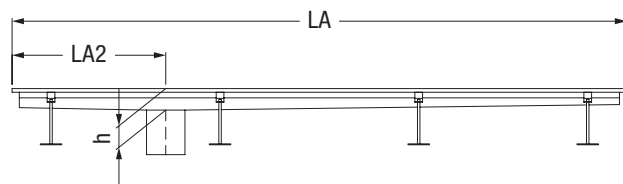
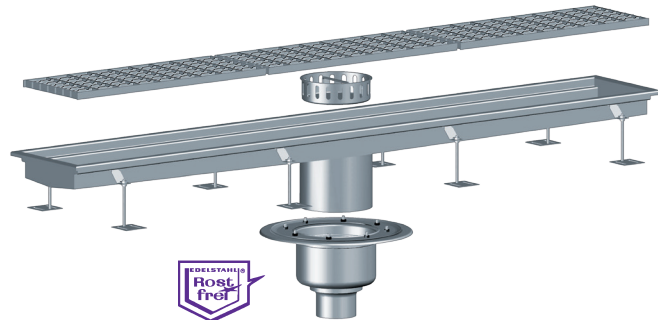
**Channel lengths:** From 200 mm

**Channel shapes:** Straight, L-shaped, U-shaped, T-shaped, grating(s), mitre joint(s)

**Channel profiles:** ① U-profile, ② adhesive edge for shallow bed seals (compound seals), ③ tile connector to protect the tiles from breaking at the edge (not for shallow bed); all profiles also available with hollow-free filling of the visible covers

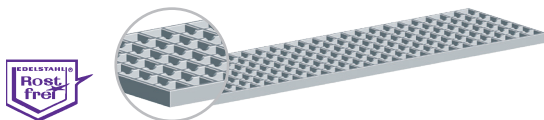
### ➤ Matching drain body and accessories:

- System 100 on request
- System 125 see from page 12
- System 200 see from page 18



➤ **Sludge trap in stainless steel optional:** System 100, 125, 200 see from page 262, all sludge traps also available in special sizes

## Covers



### Cover in stainless steel

Anti-slip R 11, acid-treated in pickling bath  
Mesh width 23×23 mm or 30×30 mm, class L 15 or M 125

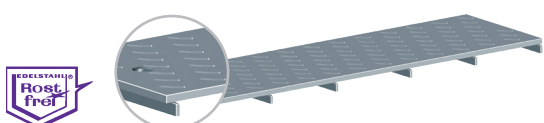


### Rod cover in stainless steel

Not anti-slip, acid-treated in pickling bath  
Rod clearance 18 mm, supporting member 25×8 mm, class M 125

### Slab cover in stainless steel

Not anti-slip, glass bead-blasted  
All-round 8 mm inlet, material thickness 10 mm, class M 125

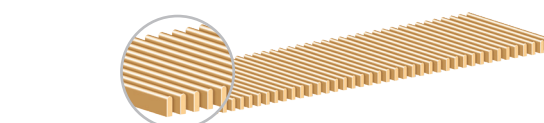


### Ribbed plate cover in stainless steel

Anti-slip R 11, acid-treated in pickling bath  
All-round 8 mm inlet  
Material thickness 10 mm, class M 125

### Bathroom cover in stainless steel

Suitable for barefoot area, brushed surface, perforation 8 x 8 mm, Insertion depth 25 mm, thickness 2 mm, class K 3



### Bathroom cover made of polymer

Suitable for barefoot area, with rounded or flat upper profile  
Colours white, grey, beige or yellow (other RAL colours on request)  
Insertion depth 25 mm, class K 3

## Slotted channel *Ferrofix*

in stainless steel AISI 304

Made of stainless steel AISI 304

Material thickness 2.0 mm - acid-treated in pickling bath, visible cover sanded, with longitudinal and transverse slopes, feet for height adjustment.

Including gully, drain pipes in stainless steel  
(System 100 = Ø 110 mm, System 125 = Ø 125 mm, System 200 = Ø 200 mm – depends on the gully width), material 1.4301 – AISI 304, (1.4404 or 1.4571 – AISI 316L on request)

**Channel widths / lengths:** 60 mm, 48 mm / from 600 mm

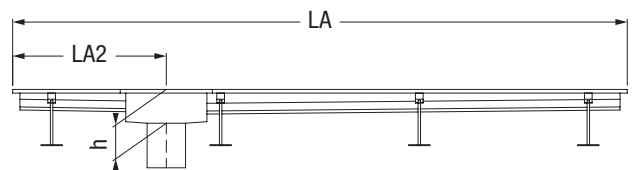
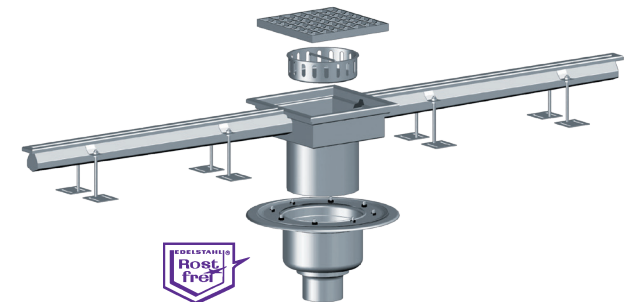
**Slot widths:** 20 mm (standard width), 8 mm (barefoot area)

**Channel shapes and gully:** Straight with gully on the edge of the channel, straight with gully in the middle, L-shaped with gully in the intersection, T-shaped with gully in the intersection, cross-shaped with gully in the intersection

**Channel profiles:** ① U-profile, ② adhesive edge for shallow bed seals (compound seals), ③ tile connector to protect the tiles from breaking at the edge (not for shallow bed); all profiles also available with hollow-free filling of the visible covers

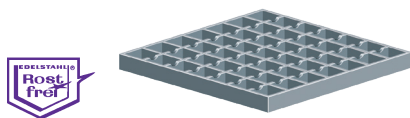
### ➤ Matching drain body and accessories:

- System 100 on request
- System 125 see from page 12
- System 200 see from page 18



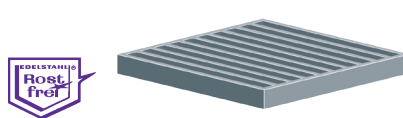
➤ **Sludge trap in stainless steel optional:** System 100, 125, 200 see from page 262, all sludge traps also available in special sizes

## Covers



### Cover in stainless steel

Anti-slip R 11, acid-treated in pickling bath  
Mesh width 23×23 mm or 30×30 mm, class L 15 or M 125



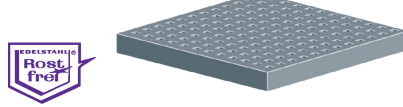
### Rod cover in stainless steel

Not anti-slip, acid-treated in pickling bath  
Rod clearance 18 mm, supporting member 25×8 mm, class M 125



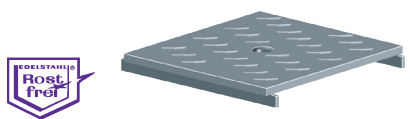
### Slab cover in stainless steel

Not anti-slip, glass bead-blasted  
All-round 8 mm inlet, material thickness 10 mm, class M 125



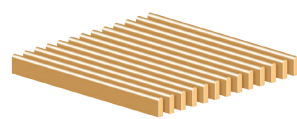
### Bathroom cover in stainless steel

Suitable for barefoot area, brushed surface, perforation 8×8 mm,  
Insertion depth 25 mm, thickness 2 mm, class K 3



### Ribbed plate cover in stainless steel

Anti-slip R 11, acid-treated in pickling bath  
All-round 8 mm inlet  
Material thickness 10 mm, class M 125



### Bathroom cover made of polymer

Suitable for barefoot area, with rounded or flat upper profile  
Colours white, grey, beige or yellow (other RAL colours on request)  
Insertion depth 25 mm, class K 3



## Accessories

System 100

System 125

System 200

Stainless steel channels *Ferrofix*

### Sludge trap system 100

up to 158 mm width

Art. no.

Height 39 mm

**Material:** Stainless steel AISI 304  
**Compatibility:** For box channel *Ferrofix*



67 304

Height 90 mm

**Material:** Stainless steel AISI 304  
**Compatibility:** For stainless steel channels *Ferrofix*  
**Note:** Not for drainage channels *Ferrofix Express*



6101SKH

### Sludge trap system 125

up to 200 mm width

Art. no.

Height 31 mm

**Material:** Stainless steel AISI 304  
**Compatibility:** For stainless steel channels *Ferrofix*



48 636

Height 90 mm

**Material:** Stainless steel AISI 304  
**Compatibility:** For stainless steel channels *Ferrofix*



6125SKH

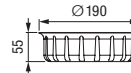
### Sludge trap system 200

up to 300 mm width

Art. no.

Height 55 mm

**Material:** Stainless steel AISI 304  
**Compatibility:** For stainless steel channels *Ferrofix*



6200SKN



Further information  
see

[www.kessel.ro](http://www.kessel.ro)

## **KESSEL ROMANIA SRL**

Matei Basarab 83 • 030673 Bucuresti • Romania

[www.kessel.ro](http://www.kessel.ro)

[www.kessel.com](http://www.kessel.com)