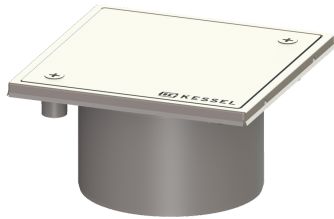


## Cleanout Sys 100, ABS, Cover 304 SST, screw, L15



### Article information

Item no.: 27196G  
 GTIN: 4026092054963  
 Price group: 70

### Description

The cleanout, made of polymer with grating and frame made of stainless steel, serves as an upper section for direct connection on pipes and is equipped with a closed, screwed cover plate.

Variant	
System:	100
Dimensions	
Net weight:	0,72 kg
Gross weight:	0,79 kg
Height:	93 mm
Packaging dimension:	length
Packaging dimension:	width
Packaging dimension:	height
Coverage features	
Type of cover:	closed cover plate
Cover material:	Stainless steel 14301
Colour of cover:	silver
Height of cover:	17 mm
Surface:	Polished SST
Frame material:	Stainless steel 14301
Locking:	screwed
Load class:	L 15 (EN 1253-1)
Rim width:	150 mm
Rim length:	150 mm
Shape of upper section:	square
Upper section material:	ABS