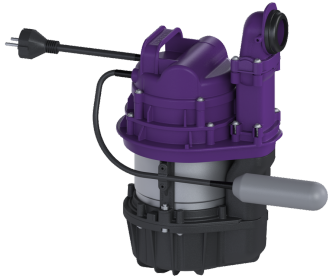


## Technology kit Aqualift S Comp GTF1200Res Mon fl.switch



### Article information

Item no.: 281200C-TK  
GTIN: 4026092108130  
Price group: 20

### Description

For combination with a KESSEL shell kit for creating a Mono lifting station for wastewater without sewage with a GTF1200 wastewater pump.

The ready to plug in lifting station for wastewater without sewage is equipped with a submersible pump and a backflow preventer. The collection tank made of permanently resistant polymer (PE) has an open pump tank. One-handed closures enable easy removal of the integrated components. The system for installation in the floor slab is pre-assembled for final installation on site.

### KESSEL technology kit consisting of:

- Pump with multi-vane vortex impeller for maximum operating safety
- Resistant to saline media, wastewater from water softening systems and wastewater containing condensate from heating systems
- Includes float switch for level measurement

#### Variant

|                 |   |
|-----------------|---|
| Type of system: | Single unit   |
| Resistant:      | Resistant to waste water containing salt, softener and condensate |
| Pump control:   | Float switch  |

#### Dimensions

|                      |          |
|----------------------|----------|
| Net weight:          | 9,75 kg  |
| Gross weight:        | 10,54 kg |
| Packaging dimension: | length   |
| Packaging dimension: | width    |
| Packaging dimension: | height   |

#### Tank/drain body

|                 |      |
|-----------------|------|
| Pumping volume: | 16 l |
|-----------------|------|

|  |                                |
|--|--------------------------------|
| Pumping device                                     |                                |
| Pump:  | GTF 1200 resistant             |
| Number of pumps:                                   | 1                              |
| Weight, pump:                                      | 10 kg                          |
| Connection type:                                   | Schuko (earthed contact) 2-pin |
| Protection class:                                  | I                              |
| Insulation class:                                  | F                              |
| Protection class (pump):                           | IP 68 (3m)                     |
| Temperature monitoring:                            | integrated                     |
| Max. temperature (permanent) of conveyed material: | 40 °C                          |
| Hot water resistance for a short time (2 min):     | 80 °C                          |
| Max. pumping capacity:                             | 15,5 m³/h                      |
| Max. pumping height:                               | 9 m                            |
| Speed:   | 2650 U/min                     |
| Power P1:  | 1,4 kW                         |
| Power P2:  | 0,84 kW                        |
| Operating mode:                                    | S3 - 10 %                      |
| Type of pump connection cable:                     | H07RN-F 3G 1.5 mm²             |
| Impeller type:                                     | Multi-vane impeller            |
| Free passage:                                      | 30 mm                          |
| Type of fuse required (pump):                      | C 16 A                         |
| Length of mains cable for pump:                    | 5 m                            |
| Rated current:                                     | 6,2 A                          |
| Control  |                                |
| Level measurement instrument:                      | Float switch                   |
| Type of level measurement:                         | mechanical                     |
| Mains frequency:                                   | 50 Hz                          |
| Operating voltage:                                 | 230 V                          |
| Connection type:                                   | Schuko (earthed contact) 2-pin |