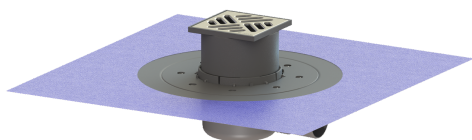


The Superflat bathroom drain glued flange, DN 50, Slotted grating



Article information

Item no.: 42701.91
 GTIN: 4026092029657
 Price group: 10

Advantages

- Movable outlet socket
- Lip seal fixed on the drain body
- Side inlet via odour trap

Description

The Superflat bathroom drain is suitable for indoor floor drainage. The drain made of PP is equipped with a secure, reliably installed seal as well as a removable odour trap.

Variant

Sealing water height:	30 mm
Discharge rate (l/s) with 20 mm threshold:	0,8

General characteristics

Nominal size (DN):	50
Outer diameter (OD):	50 mm
Odour trap:	included

Dimensions

Vertical adjustment:	19 - 27 mm
Net weight:	0,99 kg
Gross weight:	1,21 kg
Cutout dimension, width:	350 mm
Cutout dimension, length:	350 mm
Type of height adjustability:	vertically adjustable upper section
Length:	332 mm
Width:	332 mm
Packaging dimension:	length
Packaging dimension:	width
Packaging dimension:	height

Tank/drain body

Number of outlets:	1
Inlet nominal size (DN):	40 mm
Number of inlets:	1
Material of drain body:	PP

Coverage features

Type of cover:	Slotted cover
Cover material:	Stainless steel 14301
Colour of cover:	silver
Width of cover:	100 mm
Length of cover:	100 mm
Frame material:	PP
Locking:	placed
Load class:	K 3 (EN 1253-1)
Rim width:	107 mm
Rim length:	107 mm
Upper section material:	PP