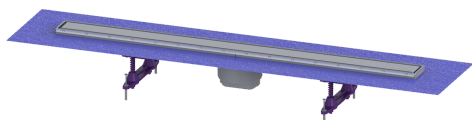


Upper section, Linearis Compact L: 950 mm, Sys 100, 304 SST cover, K 3



Article information

Item no.: 47810S
GTIN: 4026092079966
Price group: 10

Advantages

- Individual design with reversible stainless steel insert
- Low installation depth
- Ready-to-install complete set

Description

Used in combination with a drain body of the KESSEL 100 modular system, the Linearis Compact upper section is suitable for use as indoor linear drainage.

Variant	
System:	100
Seepage opening:	yes
Waterproofing layer on the upper section:	Enclosed sealing collar to be glued (bd) according to DIN 18534
Water exposure class in accordance to DIN 18534-1 (up to and including):	W3-I
Sealing water height:	50 mm
Discharge rate (l/s) with 10 mm threshold:	0,6
Discharge rate (l/s) without threshold:	0,5 mm
General characteristics	
Nominal size (DN):	100
Outer diameter (OD):	100 mm
Odour trap:	included
Dimensions	
Net weight:	2,3 kg
Gross weight:	2,88 kg
Outer dimension, length:	1015 mm
Installation depth:	80 - 140 mm
Width:	136 mm
Height:	77 mm
Packaging dimension:	length
Packaging dimension:	width
Packaging dimension:	height

Coverage features

Type of cover:	Stainless steel cover
Cover material:	Stainless steel 14301
Colour of cover:	silver
Frame material:	Stainless steel 14301
Load class:	K 3 (EN 1253-1)
Grating design:	optionally tileable
Rim width:	66 mm
Rim length:	950 mm
Upper section material:	ABS