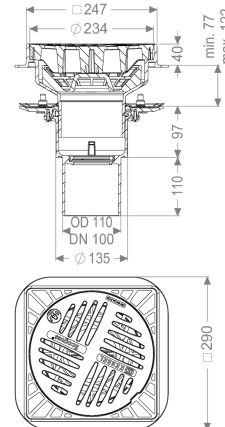


## Parking deck drain, Ecoguss Pressure sealing flange, DN 100, square



### Article information

Item no.: 48811.01  
 GTIN: 4026092036099  
 Price group: 40

### Advantages

- Breakproof & load resistant
- withstand temperatures up to 400 degrees Celsius

### Description

The Ecoguss parking deck drain is used for point drainage and is equipped with a sludge bucket. The recyclable composite material Ecoguss is temperature resistant and has a permanently corrosion-free surface. The outlet socket is suitable for connection to SML cast iron pipes. Separate equipotential bonding is not necessary. For products with pressure sealing flange:

The pressure sealing flange with bolts and screws made of stainless steel is used for the clamping or welding of bitumen and polymer bitumen sheets as well as for polymer and elastomer sealing sheets. Only membranes tested by the manufacturer may be used for watertight seals. The outlet socket is suitable for connection to SML cast iron pipes. With connection option for equipotential bonding. It can be exposed to flames for short periods, 100 up to 400 degrees Celsius.

Variant	
System:	125
Contents of sludge trap:	yes
Waterproofing layer on the drain body:	Press sealing flange (suitable for creating watertight seals)
Discharge rate (l/s) with 20 mm threshold:	4,5
General characteristics	
Standard:	EN 1253-2
Nominal size (DN):	100
Outer diameter (OD):	110 mm
Dimensions	
Net weight:	4,88 kg

Gross weight:	5,87 kg
Diameter:	290 mm
Cutout dimension, width:	300 mm
Cutout dimension, length:	300 mm
Length:	290 mm
Width:	290 mm
Packaging dimension:	length
Packaging dimension:	width
Packaging dimension:	height
Tank/drain body	
Material of drain body:	Ecoguss
Socket version:	vertical
Coverage features	
Type of cover:	Round slotted cover
Cover material:	Ecoguss
Colour of cover:	black
Width of cover:	234 mm
Length of cover:	234 mm
Surface:	EDM
Frame material:	Ecoguss
Locking:	Lock & Lift
Load class:	B 125 (EN 124)
Rim width:	247 mm
Rim length:	247 mm
Shape of upper section:	square
Upper section material:	Ecoguss
Contents of sludge trap:	yes