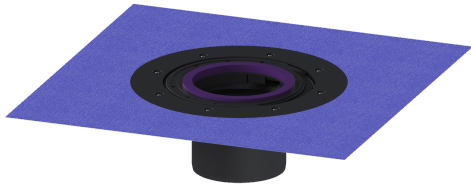


Extension section H: 120 mm, with glued flange



Article information

Item no.: 48900
GTIN: 4026092034620
Price group: 10

Description

Extension section with glued flange for alternative seals, side adjustable for adapting to the tiling pattern, including temporary protective cover

Variant

| | |
|-------|----------|
| Seal: | Lip seal |
|-------|----------|

General characteristics

| | |
|-----------|------|
| Colour: | grey |
| Material: | ABS |

Dimensions

| | |
|----------------------|---------|
| Net weight: | 1,09 kg |
| Gross weight: | 1,36 kg |
| Diameter: | 312 mm |
| Clear width (LW): | 125 mm |
| Packaging dimension: | length |
| Packaging dimension: | width |
| Packaging dimension: | height |