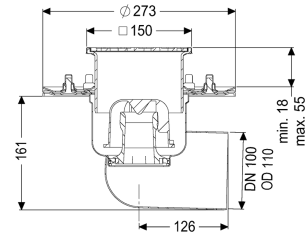


Ferrofix floor drain press, fl. DN 100, horizontal, Slotted grating



Article information

Item no.: 54220.61
 GTIN: 4026092056554
 Price group: 70

Advantages

- Made of particularly hygienic and mechanically highly resistant stainless steel
- High flow rate

Description

The Ferrofix stainless steel floor drain is used for point drainage and is equipped with a pressure sealing flange as well as a removable odour trap made of stainless steel, a lip seal and a temporary protective cover. The pressure sealing flange with bolts and screws made of stainless steel is used for the clamping or welding of bitumen and polymer bitumen sheets as well as for polymer and elastomer sealing sheets. Only membranes tested by the manufacturer may be used for watertight seals. The outlet socket is suitable for connection to SML cast iron pipes. With connection option for equipotential bonding.

Variant

| | |
|---|---|
| System: | 125 |
| Waterproofing layer on the upper section: | Connection flange |
| Waterproofing layer on the drain body: | Press sealing flange (suitable for creating watertight seals) |
| Sealing water height: | 50 mm |

General characteristics

| | |
|----------------------|-----------|
| Standard: | EN 1253-1 |
| Nominal size (DN): | 100 |
| Outer diameter (OD): | 110 mm |
| Odour trap: | included |

Dimensions

| | |
|---------------|---------|
| Net weight: | 3,77 kg |
| Gross weight: | 4,4 kg |

| | |
|-------------------------------|--|
| Type of height adjustability: | vertically adjustable upper section |
| Length: | 273 mm |
| Width: | 273 mm |
| Packaging dimension: | length |
| Packaging dimension: | width |
| Packaging dimension: | height |
| | |
| Tank/drain body | |
| Number of outlets: | 1 |
| Material of drain body: | Stainless steel 14301 |
| Socket version: | lateral |
| | |
| Coverage features | |
| Type of cover: | Slotted cover |
| Cover material: | Stainless steel 14301 |
| Width of cover: | 138 mm |
| Length of cover: | 138 mm |
| Surface: | Polished SST |
| Locking: | screwed |
| Load class: | L 15 (EN 1253-1) |
| Slip resistance class: | R11 according to DIN 51130; C according to DIN 51097 |
| | |
| Rim width: | 150 mm |
| Rim length: | 150 mm |
| Upper section: | vertically adjustable |
| Shape of upper section: | square |
| Upper section material: | ABS |