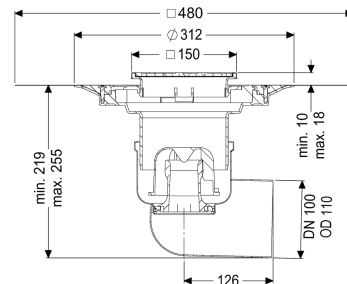
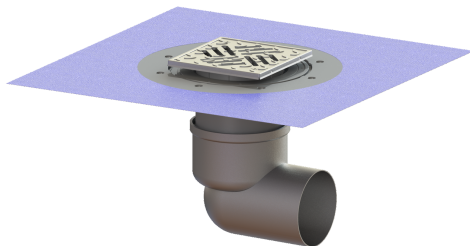


## Ferrofix floor/roof drain DN 100, horiz., Waterpr layer, Slot grt



### Article information

Item no.: 54420.52  
 GTIN: 4026092056295  
 Price group: 70

### Advantages

- Made of particularly hygienic and mechanically highly resistant stainless steel
- High flow rate

### Description

The Ferrofix stainless steel floor drain is used for point drainage and is equipped with a removable odour trap made of stainless steel, a lip seal and a temporary protective cover. The outlet socket is suitable for connection to SML cast iron pipes.

Variant

System:

Waterproofing layer on the upper section:

Waterproofing layer on the drain body:

Sealing water height:

125

Enclosed sealing collar to be glued (bd) according to DIN 18534

Connection flange

50 mm

General characteristics

Standard:

Nominal size (DN):

Outer diameter (OD):

Odour trap:

EN 1253-1

100

110 mm

included

Dimensions

Vertical adjustment:

Net weight:

Gross weight:

Type of height adjustability:

Length:

Width:

10 - 18 mm

3,8 kg

3,89 kg

vertically adjustable upper section

196 mm

142 mm

Packaging dimension:	length
Packaging dimension:	width
Packaging dimension:	height
Tank/drain body	
Number of outlets:	1
Material of drain body:	Stainless steel 14301
Socket version:	lateral
Coverage features	
Type of cover:	Slotted cover
Cover material:	Stainless steel 14301
Width of cover:	138 mm
Length of cover:	138 mm
Locking:	screwed
Load class:	L 15 (EN 1253-1)
Slip resistance class:	R11 according to DIN 51130; C according to DIN 51097
Rim width:	150 mm
Rim length:	150 mm
Upper section:	adjustable in three dimensions
Upper section material:	ABS