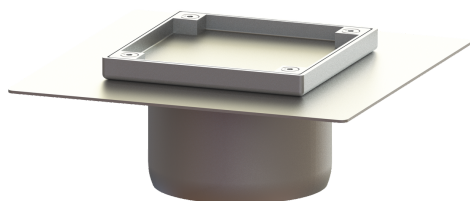


Cleanout Sys 125, Gl fl., tileable, odour-tight



Article information

Item no.: 54911
 GTIN: 4026092072394
 Price group: 70

Description

The cleanout, made of polymer with grating and frame made of stainless steel, serves as an upper section for direct connection on pipes and is equipped with a closed, screwed cover plate.

Variant

System: 125
 Waterproofing layer on the upper section: Adhesive flange (suitable for moisture barriers)

Dimensions

Net weight: 2,14 kg
 Gross weight: 2,3 kg
 Length: 246 mm
 Width: 246 mm
 Height: 100 mm
 Packaging dimension: length
 Packaging dimension: width
 Packaging dimension: height

Coverage features

Type of cover: tileable cover plate
 Cover material: Stainless steel 14301
 Height of cover: 15 mm
 Surface: Polished SST
 Locking: screwed
 Load class: L 15 (EN 1253-1)
 Tightness: odour-tight
 Rim width: 146 mm
 Rim length: 146 mm
 Max. flooring height: 15 mm
 Shape of upper section: square
 Upper section material: Stainless steel 14301