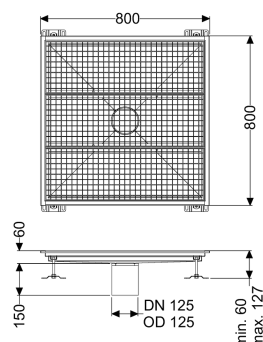
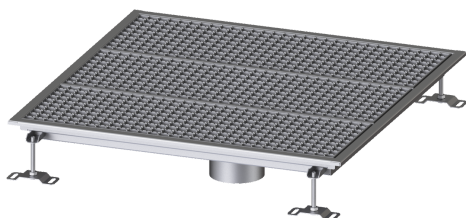


Floor Tray Ferrofix without glued flange, 800x800mm



Article information

Item no.: 6180800
GTIN: 4026092099414
Price group: 80

Advantages

- Made of particularly a hygienic and mechanically highly resistant stainless steel
- Variably combinable with suitable drain bodies

Description

The Floor tray Ferrofix made of stainless steel with a material thickness of 2.0 mm (pickled in the immersion bath) is equipped with polished visible ridges, longitudinal and transverse slopes, feet for height adjustment and stainless steel outlet nozzles.

Variant

Waterproofing layer on the upper section: Connection flange

General characteristics

Nominal size (DN): 125
Outer diameter (OD): 125 mm

Dimensions

Net weight: 29 kg
Gross weight: 29 kg
Length: 800 mm
Width: 800 mm
Height: 60 mm

Coverage features

Type of cover: Slotted cover
Colour of cover: silver
Locking: placed
Load class: L 15 (EN 1253-1)

Slip resistance class:

R12 according to DIN 51130; C according to DIN 51097

Upper section material:

Stainless steel 14301