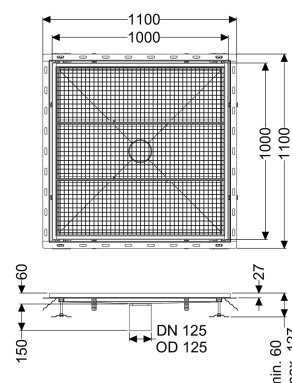
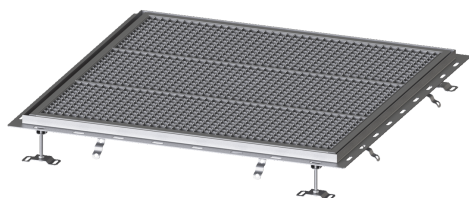


## Ferfix floor tray tile connect. angle profile, 1000x1000mm



### Article information

Item no.: 6300100  
 GTIN: 4026092099476  
 Price group: 80

### Advantages

- The channel profile is suitable for installation situations with high thermal loads
- Made of particularly a hygienic and mechanically highly resistant stainless steel
- Variably combinable with suitable drain bodies

### Description

The Ferfix floor tray made of stainless steel with a material thickness of 2.0 mm (pickled in the immersion bath) is equipped with polished visible ridges, longitudinal and transverse slopes, feet for height adjustment and stainless steel outlet nozzles. The channel profile is suitable for installation situations with high thermal loads. The tile connection angle profile protects against tile breakage at the edge.

#### Variant

Waterproofing layer on the upper section: Tile connection angle

#### General characteristics

Nominal size (DN): 125  
 Outer diameter (OD): 125 mm

#### Dimensions

Net weight: 49 kg  
 Gross weight: 49 kg  
 Length: 1000 mm  
 Width: 1000 mm  
 Height: 60 mm

#### Coverage features

Type of cover: Slotted cover  
 Colour of cover: silver

|                         |  |
|-------------------------|--|
| Locking:                | placed   |
| Load class:             | L 15 (EN 1253-1)                                     |
| Slip resistance class:  | R12 according to DIN 51130; C according to DIN 51097 |
| Upper section material: | Stainless steel 14301                                |