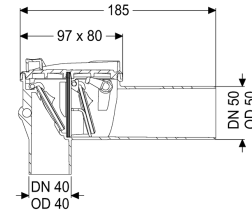
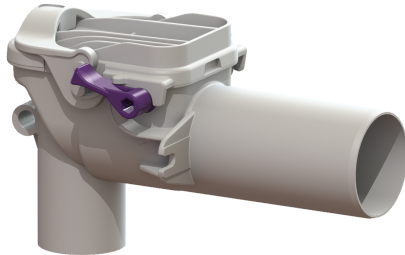


## Backwater valve Staufix Siphon, DN 50, Sink, Type 5



### Article information

Item no.: 73051  
GTIN: 4026092027400  
Price group: 10

### Advantages

- Ideal for modernisation: can also be installed in existing pipes later
- Simple, toolless maintenance and cleaning
- Corrosion-free

### Description

The backwater valve for wastewater without sewage is equipped with two mechanical flaps which close automatically in the event of backwater. One flap serves at the same time as an emergency closure to be closed by hand.

#### Variant

Emergency closure:	yes
Mechanical backwater flaps:	2

#### General characteristics

Colour:	white
Standard:	EN 13564
Nominal size (DN):	50
Type of wastewater:	without sewage
Installation situation:	installation as sink siphon
Delivery state:	installation-ready
Backwater protection:	Type 5

#### Dimensions

Net weight:	0,25 kg
Gross weight:	0,29 kg
Length:	183 mm
Width:	80 mm
Height:	110 mm
Packaging dimension:	length

Packaging dimension:  
Packaging dimension:

width  
height

Coverage features  
Cover locking:

One-handed closure