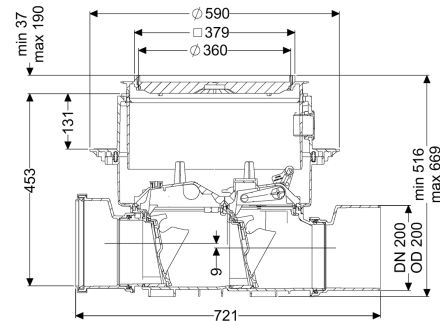
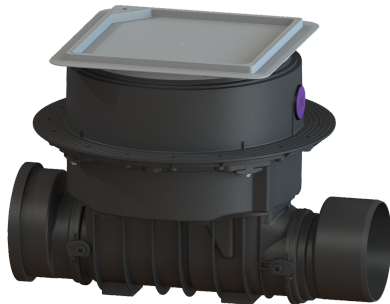


Backwater valve Staufix SWA DN 200, Floor slab, tileable



Article information

Item no.: 73200.10X
 GTIN: 4026092073544
 Price group: 30

Advantages

- Simple conversion to Staufix FKA or Pumpfix F
- Fast, simple and toolless maintenance
- Available as a complete set or module set

Description

The premium backwater valve for wastewater without sewage is equipped with two mechanical flaps which close automatically in the event of backwater. One flap serves at the same time as an emergency closure to be closed by hand. Thanks to the modular KESSEL system, existing systems can easily be converted to a Staufix FKA premium backwater valve or a Pumpfix F backwater pumping station.

Variant

| | |
|-----------------------------|-----|
| Emergency closure: | yes |
| Mechanical backwater flaps: | 2 |

General characteristics

| | |
|-------------------------|-----------------------------------------------------------------|
| Colour: | black |
| Standard: | EN 13564 |
| Nominal size (DN): | 200 |
| Outer diameter (OD): | 200 mm |
| Note on nominal size: | Hydraulics correspond to DN 150 |
| Type of wastewater: | without sewage |
| Installation situation: | floor slab installation |
| Delivery state: | Installation-ready (connection parts must be connected on site) |
| Backwater protection: | Type 2 |

Dimensions

| | |
|---------------|---------|
| Net weight: | 14 kg |
| Gross weight: | 19,5 kg |

| | |
|--------------------------------------------------------|-------------------------------------|
| Groundwater resistant from lower edge of base section: | 3000 mm |
| Cutout dimension, width: | 750 mm |
| Cutout dimension, length: | 750 mm |
| Vertical drop between inlet and outlet: | 9 mm |
| Installation depth: | 516 - 669 mm |
| Type of height adjustability: | vertically adjustable upper section |
| Length: | 720 mm |
| Width: | 590 mm |
| Packaging dimension: | length |
| Packaging dimension: | width |
| Packaging dimension: | height |
| Tank/drain body | |
| Socket version: | including spigot and socket |
| Coverage features | |
| Type of cover: | tileable cover plate |
| Cover material: | Polymer |
| Width of cover: | 366 mm |
| Length of cover: | 366 mm |
| Locking: | Lock & Lift |
| Load class: | K 3 (EN 1253-1) |
| Tightness: | surface water resistant |
| Max. flooring height: | 16 mm |