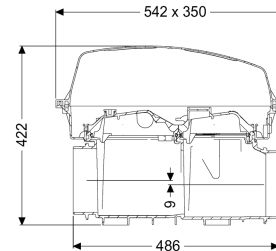
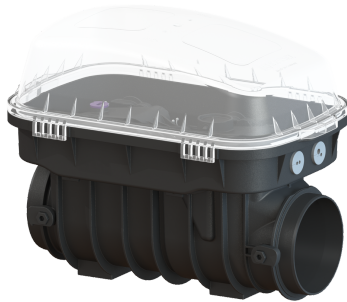


Controfix clean out w/o socket, exposed



Article information

Item no.: 80000
 GTIN: 4026092053812
 Price group: 30

Advantages

- Simple conversion to Staufix SWA
- Fast, simple and toolless maintenance
- Quick and toolless access for cleaning

Description

The Premium clean out for faecal and faecal-free wastewater makes easy access to wastewater pipes possible for inspection and maintenance work. Thanks to the modular KESSEL system, existing systems can easily be converted to a Staufix SWA Premium backwater valve, Staufix FKA or Pumpfix F backwater pumping station.

General characteristics

| | |
|-------------------------|--|
| Colour: | black |
| Type of wastewater: | for wastewater with and without sewage |
| Installation situation: | exposed drainage pipe |
| Delivery state: | Modular set for assembly on site |

Dimensions

| | |
|---|---------|
| Net weight: | 6,78 kg |
| Gross weight: | 8,28 kg |
| Vertical drop between inlet and outlet: | 9 mm |
| Length: | 486 mm |
| Width: | 350 mm |
| Height: | 422 mm |
| Packaging dimension: | length |
| Packaging dimension: | width |
| Packaging dimension: | height |

Tank/drain body

| | |
|-----------------|----------|
| Socket version: | optional |
|-----------------|----------|

Coverage features

Type of cover:

Cover material:

Colour of cover:

Width of cover:

Height of cover:

Length of cover:

Locking:

Protective cover

Polymer

transparent

350 mm

165 mm

542 mm

Clip closure