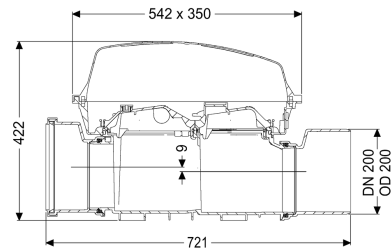
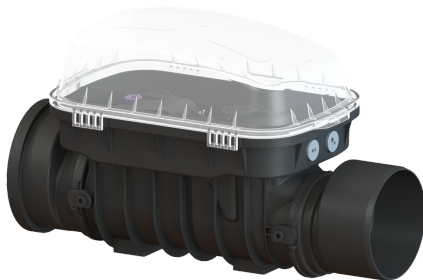


Controfix clean out DN 200, exposed



Article information

Item no.: 80200
GTIN: 4026092046623
Price group: 30

Advantages

- Simple conversion to Staufix SWA
- Fast, simple and toolless maintenance
- Quick and toolless access for cleaning

Description

The Premium clean out for faecal and faecal-free wastewater makes easy access to wastewater pipes possible for inspection and maintenance work. Thanks to the modular KESSEL system, existing systems can easily be converted to a Staufix SWA Premium backwater valve, Staufix FKA or Pumpfix F backwater pumping station.

General characteristics

| | |
|-------------------------|----------------------------------------|
| Colour: | black |
| Nominal size (DN): | 200 |
| Outer diameter (OD): | 200 mm |
| Note on nominal size: | Hydraulics correspond to DN 150 |
| Type of wastewater: | for wastewater with and without sewage |
| Installation situation: | exposed drainage pipe |
| Delivery state: | installation-ready |

Dimensions

| | |
|-----------------------------------------|---------|
| Net weight: | 6 kg |
| Gross weight: | 11,5 kg |
| Vertical drop between inlet and outlet: | 9 mm |
| Length: | 486 mm |
| Width: | 350 mm |
| Height: | 422 mm |
| Packaging dimension: | length |
| Packaging dimension: | width |
| Packaging dimension: | height |

Tank/drain body
Socket version:

including spigot and socket

Coverage features

Type of cover:

Protective cover

Cover material:

Polymer

Colour of cover:

transparent

Width of cover:

350 mm

Height of cover:

165 mm

Length of cover:

542 mm

Locking:

Clip closure