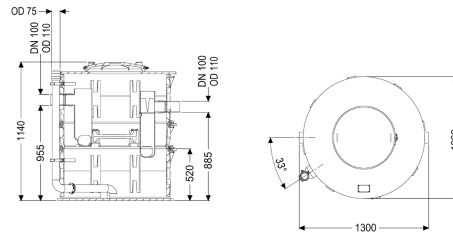


Grease separat. EasyClean Modular free, NS 3, Direct, 3-part, TS



Article information

Item no.: 93003-D1-R2-TS

GTIN: 4026092104040

Price group: 60

Advantages

- Ideal where access is tight
- can be divided into 3 parts for insertion, for an insertion opening of max. 66 cm
- Direct disposal with the tank closed

Description

The separator for greasy wastewater is suitable for free-standing set-up in frost-protected rooms and comes without metallic components in the tank. Thanks to the modular design, the separator can be inserted even where access is extremely tight. The collecting tank made of permanently resistant polymer (PE) is equipped with an integrated sludge trap. A service access cover with odour-tight cover and quick-release closures makes easy access possible for cleaning and maintenance work. A direct disposal pipe socket is available for odour-reduced manual disposal. 20 year polyethylene warranty.

Variant

| | |
|---|---------------------|
| Chamber system: | three-piece chamber |
| Disposal variant: | Direct |
| Shredder-Mix-System: | no |
| Inspection window: | no |
| Nominal size (NS): | 3 |
| SonicControl: | no |
| Disposal system: | Disposal connection |
| Refill inlet in accordance with DIN 1988: | no |
| Type of disposal: | manual |

General characteristics

| | |
|-------------------------|----------------------------|
| Material: | PE |
| Standard: | EN 1825 |
| Installation situation: | free-standing installation |

| | |
|---|---|
| Delivery state: | Installation-ready (connection parts must be connected on site) |
| Dimensions | |
| Net weight: | 110 kg |
| Gross weight: | 128 kg |
| Height centre section: | 500 mm |
| Height tank bottom up to centre section: | 550 mm |
| Height centre section to top edge of tank: | 580 mm |
| Required access area, length: | 1240 mm |
| Required access area, width: | 1383 mm |
| Required access area, height: | 1300 mm |
| Packaging dimension: | length |
| Packaging dimension: | width |
| Packaging dimension: | height |
| Tank/drain body | |
| Distance pipe bottom outlet to tank bottom: | 885 mm |
| Distance pipe bottom inlet to tank bottom: | 955 mm |
| Outlet nominal size (OD): | 110 mm |
| Outlet nominal size (DN): | 100 mm |
| Inlet nominal size (OD): | 110 mm |
| Inlet nominal size (DN): | 100 mm |
| Connection inlet/outlet sockets: | PE-HD pipes in accordance with DIN 19537, HT pipes in accordance with DIN 19560, PP or AS |
| Coverage features | |
| Type of cover: | Cover |
| Cover material: | Polymer |
| Colour of cover: | black |
| Locking: | Quick-release closure |
| Tightness: | odour-tight |
| Wastewater contents | |
| Separator contents: | 420 l |
| Contents of sludge trap: | 300 l |
| Storage quantity of grease: | 120 l |
| Control | |
| Control unit: | no |