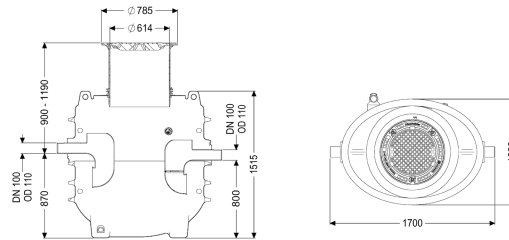


## Grease separator EasyClean ground NS 1, Direct, 900-1190 mm, D, left



### Article information

Item no.: 95010-120D-DL

GTIN: 4026092101025

Price group: 60

### Advantages

- Low odour and clean disposal
- Defined disposal point
- Complete emptying of the separator

### Description

The separator for greasy wastewater is suitable for installation in the ground and comes without metallic structural components in the tank. The collecting tank made of permanently resistant polymer (PE) is equipped with an integrated sludge trap, and has a rounded base for fast and clean disposal. Access for cleaning and maintenance work is possible via a service access cover. A direct disposal pipe socket is available for manual disposal. A load distribution slab must be installed on site for load class D. The reinforcement drawings are part of the EBA and are available from KESSEL. The tank is groundwater resistant up to ground level (GL). 20 year polyethylene warranty.

#### Variant

Note on installation depth:

Direction of flow:

Disposal variant:

Nominal size (NS):

Disposal system:

Type of disposal:

Load-bearing capacity (DIN 19901):

Installation in the ground, frost-free depth 1200 mm  
left

Direct

1

Disposal pipe

manual

E4

#### General characteristics

Material:

Standard:

Installation situation:

Delivery state:

PE

EN 1825

underground installation

Installation-ready (connection parts must be connected on site)

**Dimensions**

Net weight:	220 kg
Gross weight:	220 kg
Diameter:	648 mm
Installation depth:	900 - 1190 mm
Length:	1700 mm
Width:	1090 mm
Height:	1515 mm
Packaging dimension:	length
Packaging dimension:	width
Packaging dimension:	height

**Tank/drain body**

Distance pipe bottom outlet to tank bottom:	800 mm
Distance pipe bottom inlet to tank bottom:	870 mm
Outlet nominal size (DN):	100 mm
Inlet nominal size (OD):	110 mm
Inlet nominal size (DN):	100 mm
Connection inlet/outlet sockets:	PE-HD pipes in accordance with DIN 19537, PVC-KG pipes in accordance with DIN 19534, PP or AS
Clear width of entry (LW):	600 mm

**Coverage features**

Type of cover:	Cover plate
Cover material:	Grey iron
Colour of cover:	black
Locking:	Lock & Lift
Load class:	D 400 (EN 124)
Tightness:	odour-tight and surface water resistant

**Wastewater contents**

Separator contents:	550 l
Max. grease layer thickness:	42 mm
Total volume:	650 l
Contents of sludge trap:	100 l
Storage quantity of grease:	40 l